

CP1 CP2 CP3



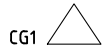
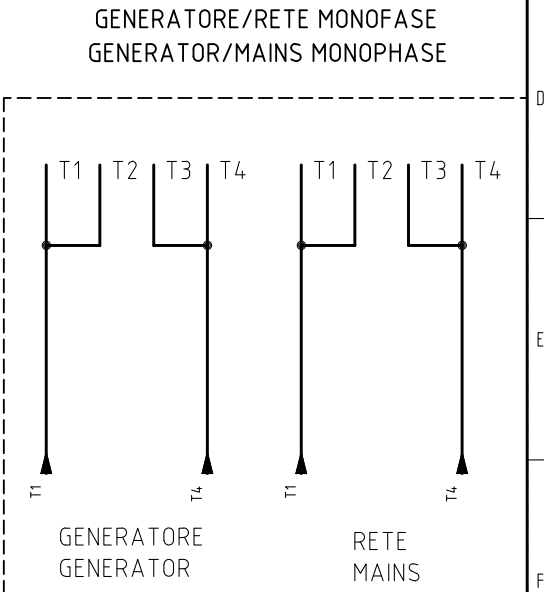
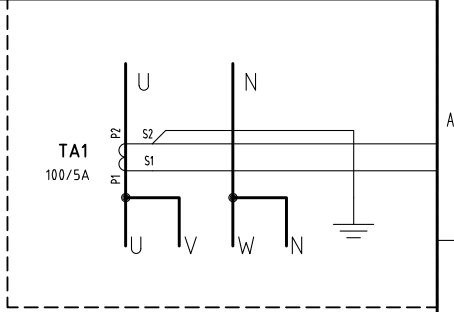
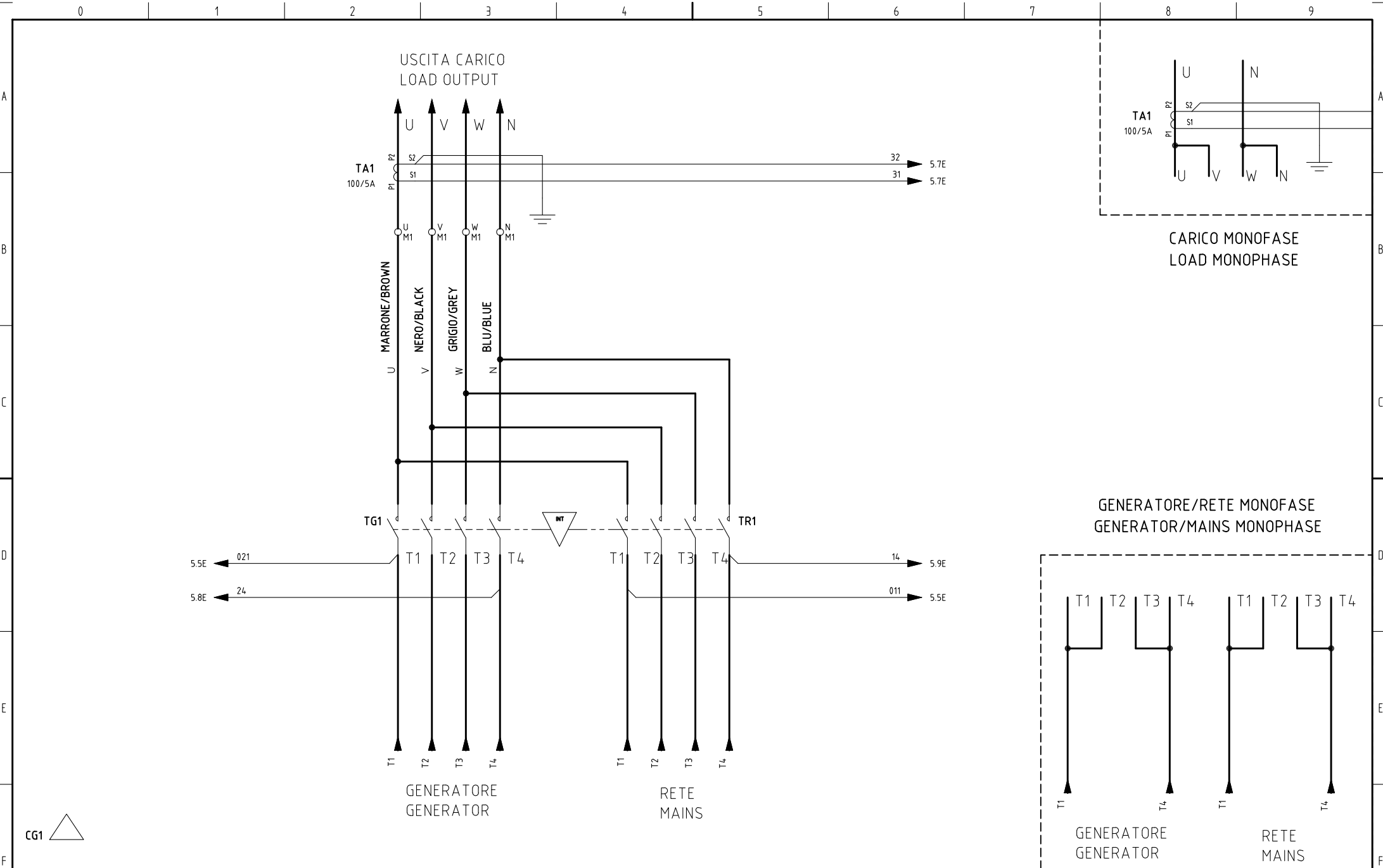
Tecnoelettra s.r.l.
 Via Dimo Vioni, 5
 42016 - San Rocco di Guastalla (RE) Italy
 E-mail: info@tecnoelettra.it WEB: www.tecnoelettra.it

REV.	MODIFICA	DATA	FIRMA	APPR.	DATA	30/06/2015
					DISEGN.	S.D.
					VISTO	REV.08

SOATC01712A001A
 LAYOUT
 LAYOUT

AA-AT20617
 AT206-6-17kVA 25A 400V 4P 12Vdc

SCALA	
FG.	
F.S.	3
F.T.	4



Tecnoletra s.r.l.
 Via Dimo Vioni, 5
 42016 - San Rocco di Guastalla (RE) Italy
 E-mail: info@tecnoletra.it WEB: www.tecnoletra.it

REV.	MODIFICA	DATA	FIRMA	APPR.	DATA	30/06/2015
					DISEGN.	S.D.
					VISTO	REV.08

SOATC01712A001A

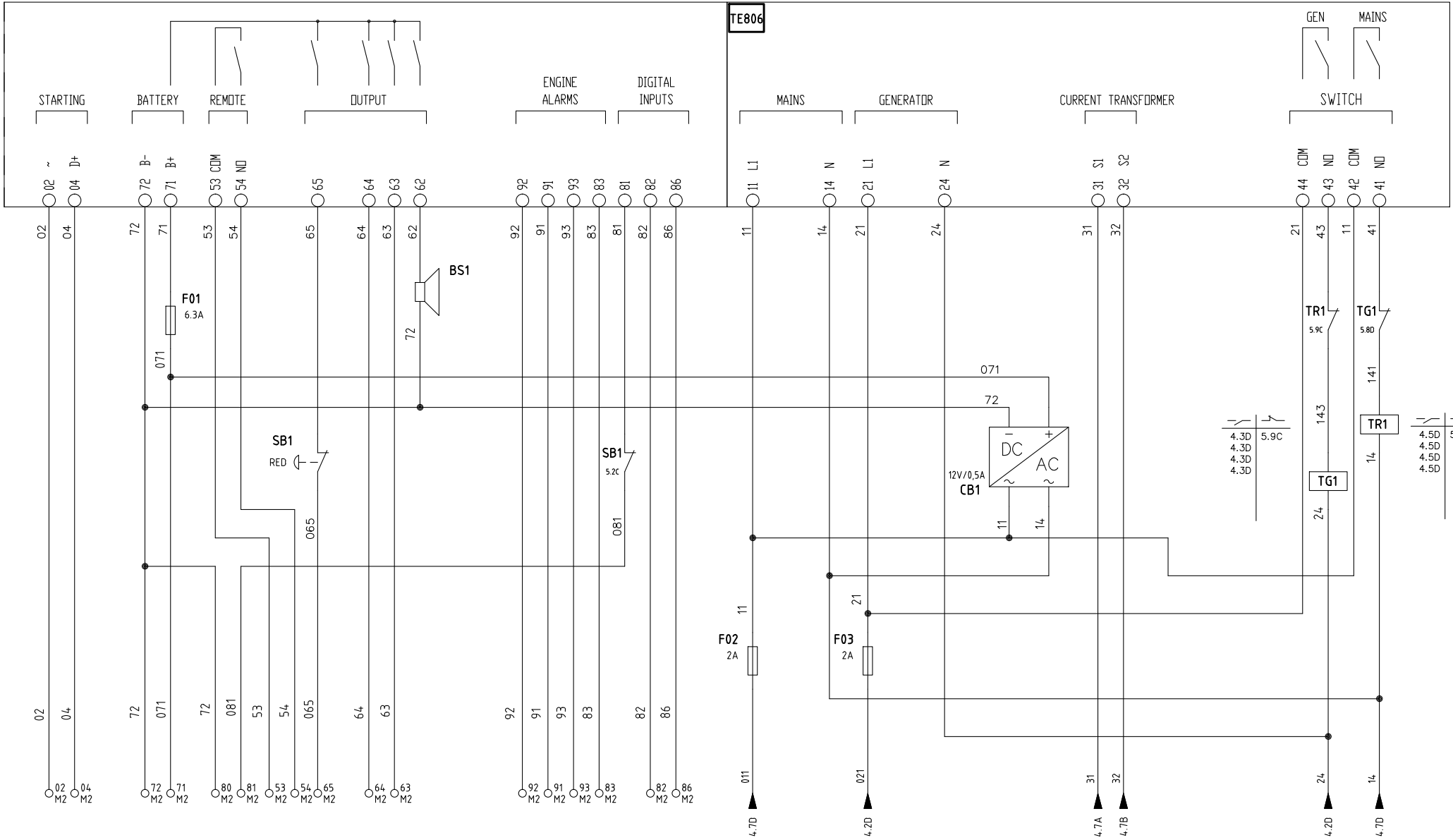
SCHEMA DI POTENZA
 POWER DRAWING

AA-AT20617
 AT206-6-17kVA 25A 400V 4P 12Vdc


SCALA	
FG.	
F.S.	4
F.T.	5

AT206

TE806



CG2

 Tecnoletra s.r.l.
 Via Dimo Vioni, 5
 42016 - San Rocco di Guastalla (RE) Italy
 E-mail: info@tecnoletra.it WEB: www.tecnoletra.it

DATA	30/06/2015
DISEGN.	S.D.
VISTO	REV.08
REV.	MODIFICA
DATA	FIRMA
APPR.	

SOATC01712A001A
 SCHEMA AUSILIARI
 AUXILIARY DRAWING

AA-AT20617	SCALA
AT206-6-17kVA 25A 400V 4P 12Vdc	FG.
	F.S. 5
	F.T. 6

TOGLIERE IL CAVALLOTTO TRA I MORSETTI 80 E 081 PER POTER INSERIRE I PULSANTI DI EMERGENZA ESTERNI.

REMOVE JUMPER FROM TERMINALS 80 AND 081 TO CONNECT THE EXTERNAL EMERGENCY BUTTONS.

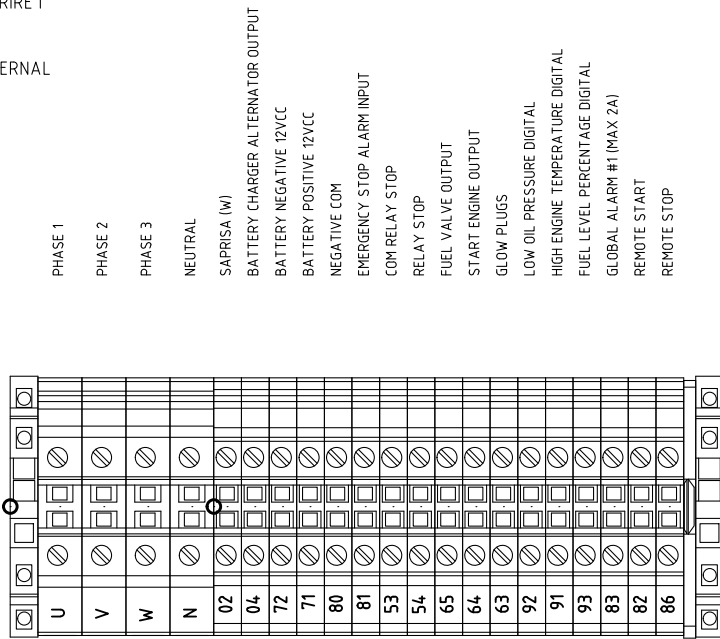
USARE UNO SOLO CONFIGURAZIONE TRA D+ E W.

CONNECT ONLY ONE CONFIGURATION BETWEEN D+ AND W.

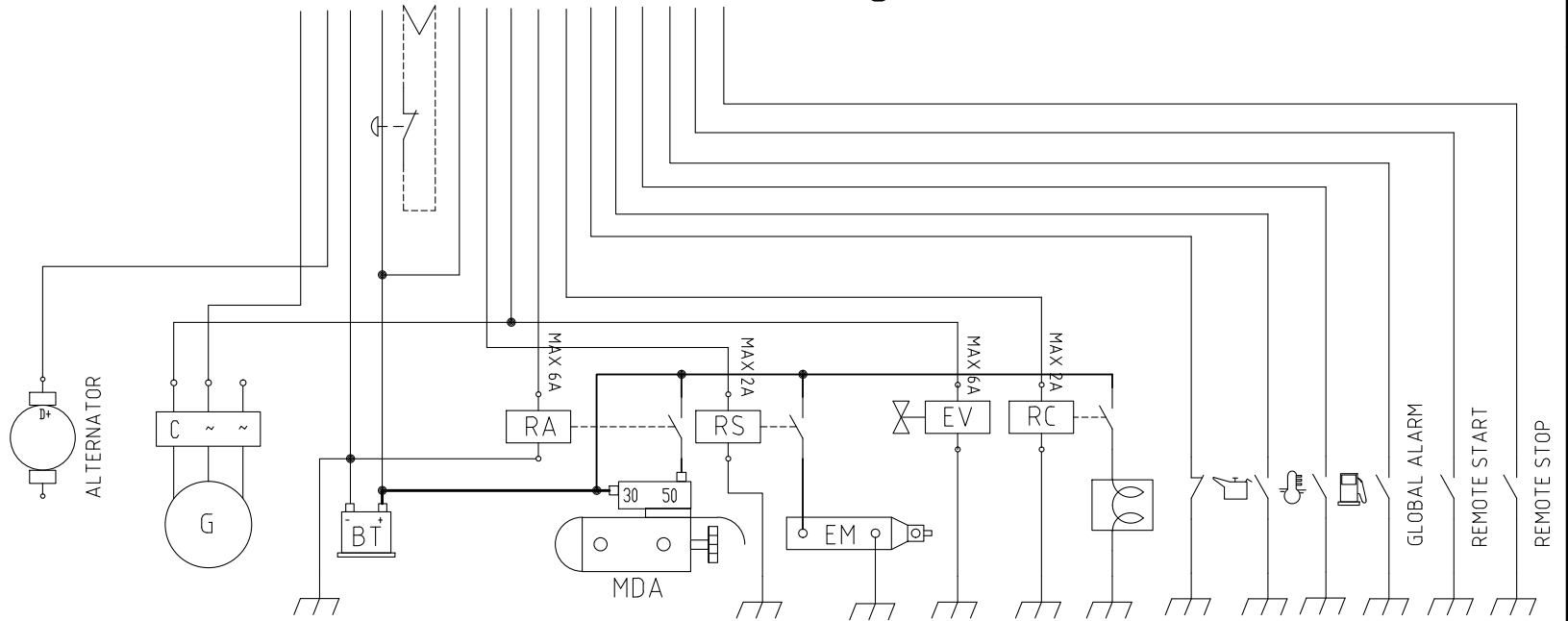
BT: BATTERIA
 RA: RELE' DI START
 RS: RELE' DI STOP
 MDA: MOTORINO DI AVVIAMENTO
 EM: ELETTROMAGNETE
 EV: ELETTROVALVOLA
 RC: RELE' CANDELETTE
 G: ALTERNATORE A MAGNETI PERMANENTI

BT: BATTERY
 RA: CRANK RELAY
 RS: STOP RELAY
 MDA: CRANKING
 EM: SOLENOID
 EV: FUEL VALVE
 RC: GLOW PLUGS RELAY
 G: PERMANENT MAGNET ALTERNATOR

M1
 Terminals board M1
 LOAD OUTPUT



M2
 Terminals board M2
 GENERATOR CONNECTIONS



Tecnoelettra s.r.l.
 Via Dimo Vioni, 5
 42016 - San Rocco di Guastalla (RE) Italy
 E-mail: info@tecnoelettra.it WEB: www.tecnoelettra.it

REV.	MODIFICA	DATA	FIRMA	DATA	30/06/2015
				DISEGN.	S.D.
				VISTO	REV.08
				APPR.	

SOATC01712A001A
 MORSETTIERA PER MOTORI DIESEL
 DIESEL MOTOR TERMINALS BOARD

AA-AT20617
 AT206-6-17kVA 25A 400V 4P 12Vdc

SCALA	
FG.	
F.S.	6
F.T.	7

TOGLIERE IL CAVALLOTTO TRA I MORSETTI 80 E 081 PER POTER INSERIRE I PULSANTI DI EMERGENZA ESTERNI.

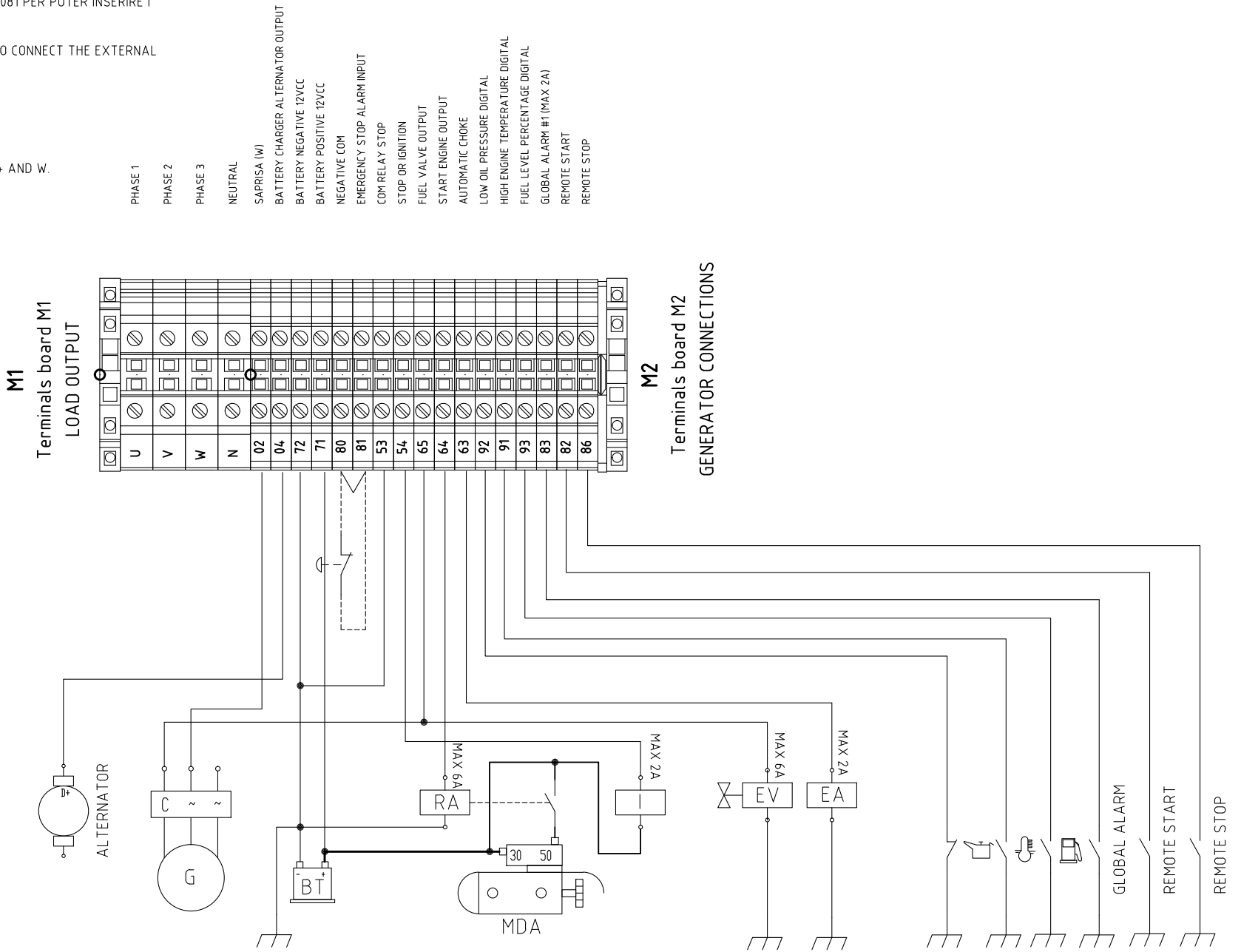
REMOVE JUMPER FROM TERMINALS 80 AND 081 TO CONNECT THE EXTERNAL EMERGENCY BUTTONS.

USARE UNO SOLO CONFIGURAZIONE TRA D+ E W.

CONNECT ONLY ONE CONFIGURATION BETWEEN D+ AND W.

BT: BATTERIA
 RA: RELE' DI START
 I: CANDELE O ACCENSIONE
 MDA: MOTORINO DI AVVIAMENTO
 EA: FUNZIONE ARIA AUTOMATICA
 G: ALTERNATORE A MAGNETI PERMANENTI

BT: BATTERY
 RA: CRANK RELAY
 I: STOP OR IGNITION
 MDA: CRANKING
 EA: AUTOMATIC CHOKE
 G: PERMANENT MAGNET ALTERNATOR



REV.	MODIFICA	DATA	FIRMA	DATA	30/06/2015
				DISEGN.	S.D.
				VISTO	REV.08
				APPR.	

AA-AT20617	SCALA
AT206-6-17kVA 25A 400V 4P 12Vdc	FG.
	F.S. 7
	F.T. 8

Nome/Item	Codice Interno	Descrizione/Description	Descrizione EN	Q.ta/Q.ty	Fg/Sh
BS1	213006	Buzzer 4-28VDC	ALARM BUZZER	1	5
CB1	24.0018G	Carica batterie a giorno in: 230V - out: 12V/0,5A	BATTERY CHARGER	1	5
F01	5050061 500014.0	PORTAFUS.DA PANNELLO XC5 6,3x32-15A 250V FUSIBILE VETRO 6,3X32 RAPIDO 250V -6,3A	FUSE HOLDER FUSE 6A	1 1	5
F02	5050061 5000135	PORTAFUS.DA PANNELLO XC5 6,3x32-15A 250V FUSIBILE VETRO 6,3X32 RAPIDO 250V -2A	FUSE HOLDER FUSE 2A	1 1	5
F03	5050061 5000135	PORTAFUS.DA PANNELLO XC5 6,3x32-15A 250V FUSIBILE VETRO 6,3X32 RAPIDO 250V -2A	FUSE HOLDER FUSE 2A	1 1	5
INT	UR02	Interblocco LS per teleruttori da MC6-MC18	MECHANICAL INTERBLOCK FOR CONTACTOR	1	4
SB1	200015A 200015B	CORPO PULSANTE EMERGENZA GGT CON FUNGO DIAM.30 CONTATTO NC per Pulsante emergenza	EMERGENCY BUTTON NC CONTACT	1 1	5
TA1	TA100/5A	TA 100/5A INGOMBRO RIDOTTO	AMPEROMETRIC TRANSFORMER	1	4
TE806	TE806	Controller TE806 per gruppi elettrogeni 12V DC	CONTROLLER	1	5
TG1	MC6A4PAC230	Teleruttore LS MC6A 4P 230V 50/60Hz 25A	GENERATOR CONTACTOR	1	5
TR1	MC6A4PAC230	Teleruttore LS MC6A 4P 230V 50/60Hz 25A	MAINS CONTACTOR	1	5



Tecnoelettra s.r.l.
Via Dimo Vioni, 5
42016 - San Rocco di Guastalla (RE) Italy
E-mail: info@tecnoelettra.it WEB: www.tecnoelettra.it

REV.	MODIFICA	DATA	FIRMA	APPR.	DATA	30/06/2015
					DISEGN.	S.D.
					VISTO	REV.08

SOATC01712A001A
ELENCO COMPONENTI RICAMBI
SPARE PARTS COMPONENTS LIST

AA-AT20617
AT206-6-17kVA 25A 400V 4P 12Vdc

SCALA	
FG.	
F.S.	8
F.T.	/