

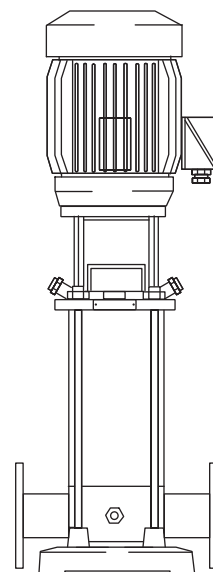


MULTISTAGE VERTICAL ELECTRIC PUMPS
ELECTROPOMPES MULTIETAGES VERTICALES
ELETTROPOMPE MULTISTADIO VERTICALI

CVX

Poles
Poles 2 50 Hz
Poli

Energy



caprari

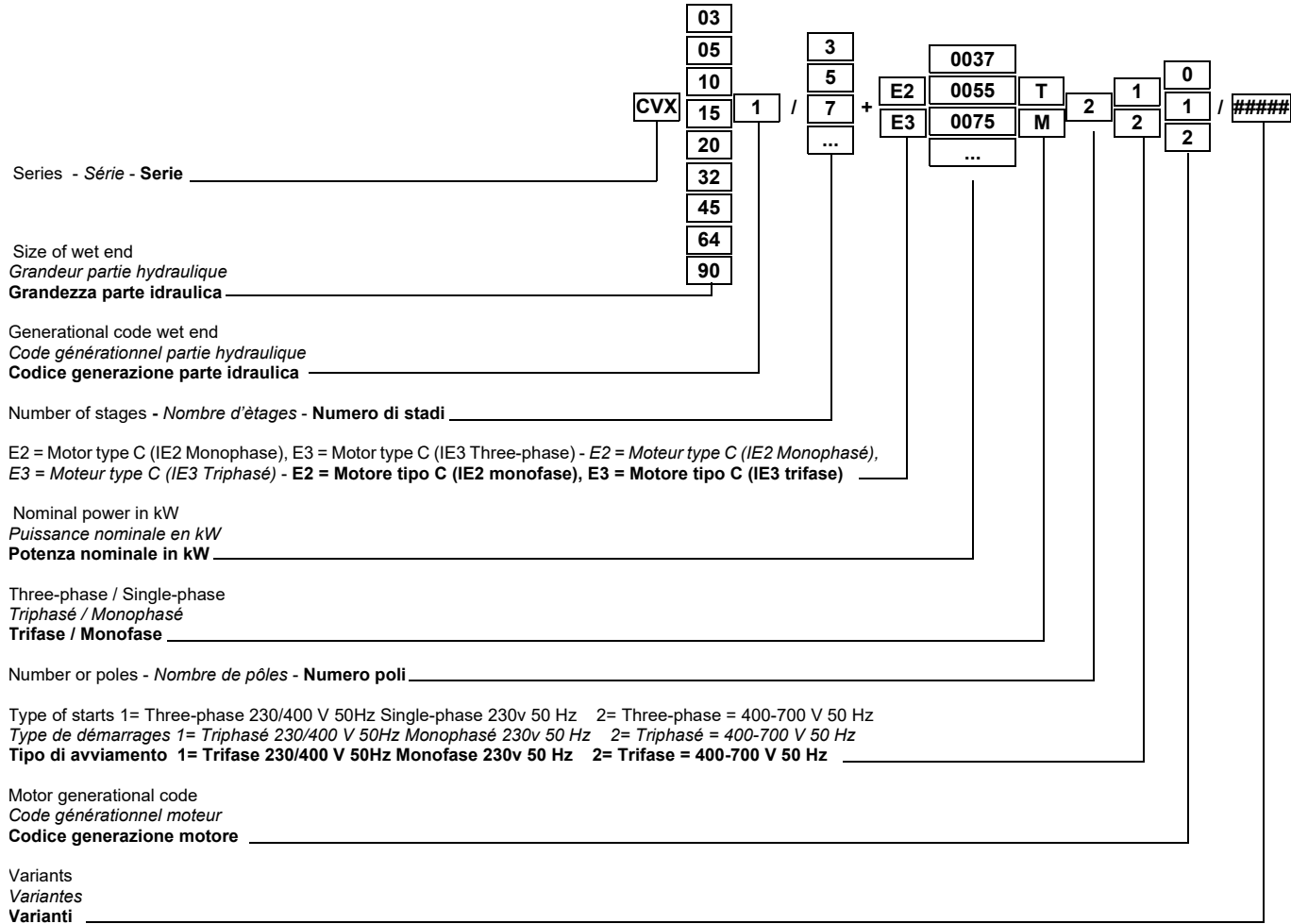
pumping power

ISO 9001
ISO 14001
ISO 45001
BUREAU VERITAS
Certification



Technical data
Données techniques
Dati tecnici

PUMP CODING - IDENTIFICATION DU SIGLE - ESEMPLIFICAZIONE SIGLA



SPECIFICATIONS - CARACTÉRISTIQUE - CARATTERISTICHE

| | | | | |
|-----------------------------------|-----------------|---|--------------------------------------|----------------|
| • Inlet/outlet ports | In line | • Orifices d'aspiration et refoulement En ligne | • Bocche ingresso/uscita | In linea |
| • Seal | Mechanical | • Garniture Mécanique | • Tenuta | Meccanica |
| • Max. temperature of pump liquid | +90°C | • Température max. du liquide pompé +90°C | • Temperatura max. liquido sollevato | +90°C |
| • Voltage | Eurovoltage | • Tension Eurotension | • Tensione | Eurotensione |
| • Frequency | Multi-frequency | • Fréquence Multifréquence | • Frequenza | Multifrequenza |
| • Efficiency class | IE3 | • Classe de rendement IE3 | • Classe di efficienza | IE3 |
| • IP | 55 | • IP 55 | • IP | 55 |
| • Poles | 2 | • Pôles 2 | • Poli | 2 |
| • VSD (inverter) | Compatible | • VSD (variateur de fréquence) Compatible | • VSD (inverter) | Compatible |

TOLERANCES - TOLERANCES - TOLLERANZE

Given specifications relate to cold water (15 °C) at a pressure of 1 bar (atmospheric) and are guaranteed as for all series pumps according to UNI/ISO 9906 Grade 3B. On demand performances can be guaranteed according to UNI/ISO 9906 Grade 1B.

The data given in the catalogue refer to liquids with a volume mass of 1 kg/dm³ and kinematic viscosity of not more than 1 mm²/s.

Les caractéristiques de fonctionnement sont relevées avec eau froide (15 °C) à la pression atmosphérique (1bar) et sont garanties, en tenant compte qu'il s'agit de pompes construites en série, selon les normes UNI/ISO 9906 Niveau 3B.

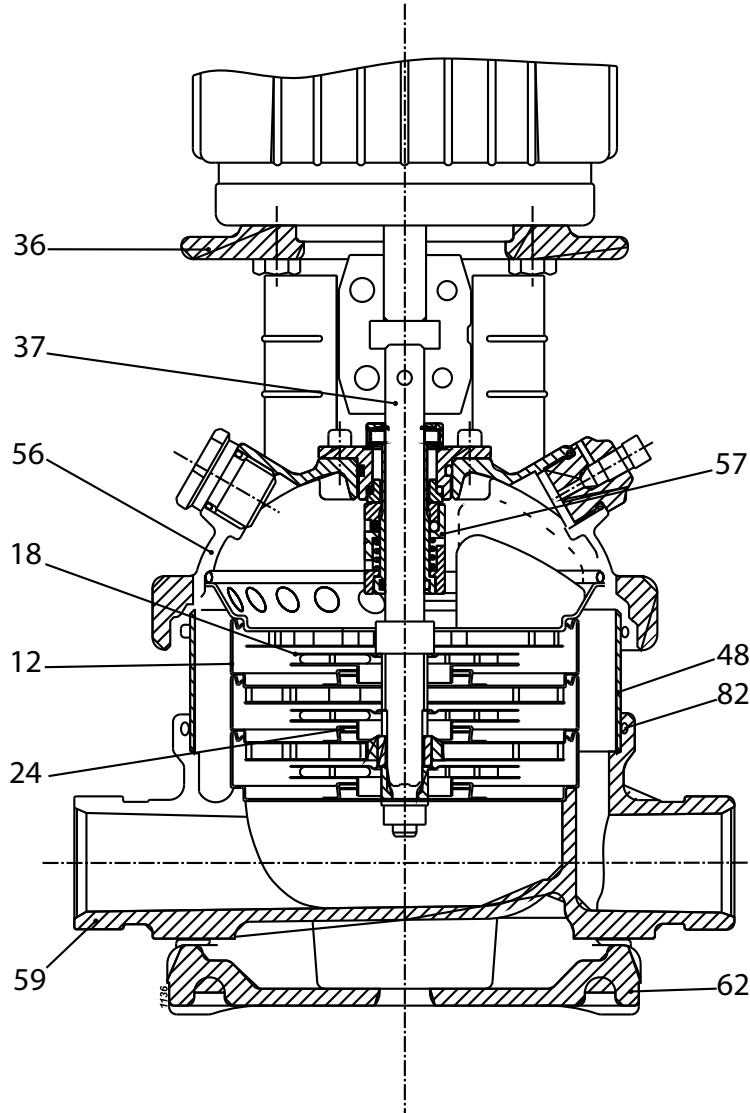
Sur demande les caractéristiques peuvent être garanties selon les normes UNI/ISO Niveau 1B.

Les données du catalogue se réfèrent à des liquides ayant une densité de 1 kg/dm³ et avec une viscosité cinématique égale ou inférieure à 1 mm²/s.

Le caratteristiche di funzionamento sono state rilevate con acqua fredda (15 °C) alla pressione atmosferica (1 bar) e vengono garantite, trattandosi di pompe costruite in serie, secondo le norme UNI/ISO 9906 grado 3B.

Su richiesta le prestazioni possono essere garantite secondo le norme UNI/ISO 9906 grado 1B.

I dati di catalogo si riferiscono a liquidi con densità di 1kg/dm³ e con viscosità cinematica non superiore a 1mm²/s.

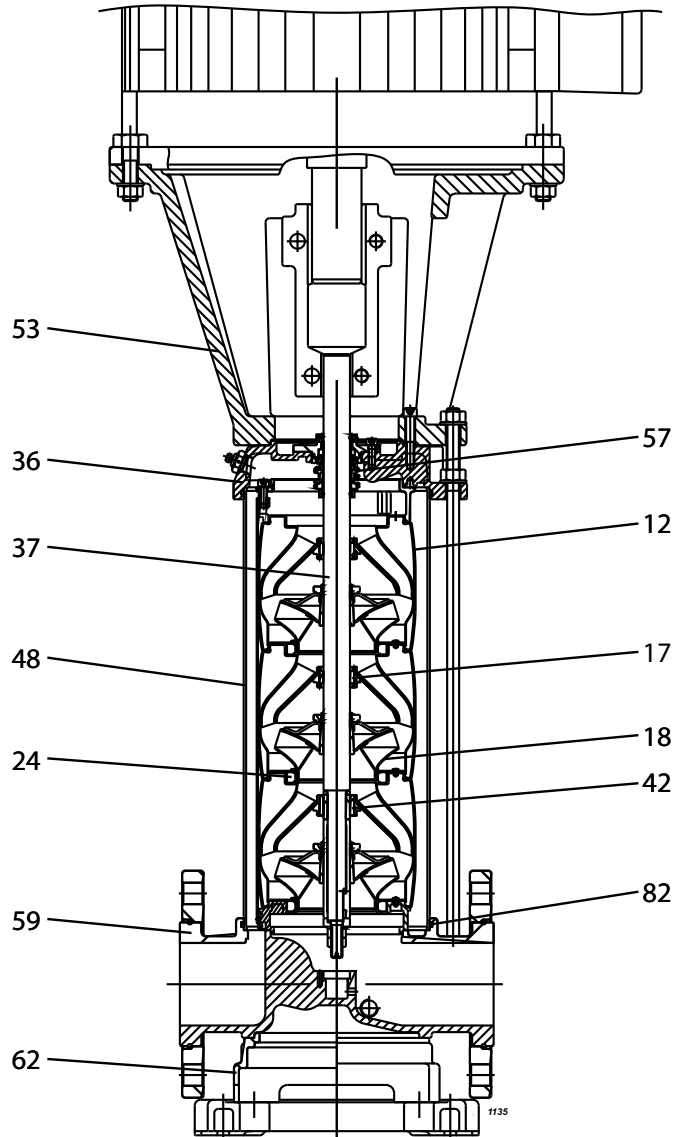


| Pos. | Parts | Materials | Nomenclature | Matériaux | Nomenclatura | Materiale |
|------|----------------------|---------------------------------|------------------------------------|---|--------------------------|---|
| 12 | Diffuser | Stainless steel | Diffuseur | Acier inox | Diffusore | Acciaio inox |
| 18 | Impeller | Stainless steel | Roue | Acier inox | Girante | Acciaio inox |
| 24 | Impeller wear ring | PTFE | Bague d'usure | PTFE | Anello sede girante | PTFE |
| 36 | Lantern bracket | Cast iron | Lanterne-support | Fonte grise | Supporto di collegamento | Ghisa grigia |
| 37 | Shaft | Stainless steel | Arbre | Acier inox | Albero | Acciaio inox |
| 45 | Inlet/Outlet Flanges | Cast iron | Brides d'aspiration et refoulement | Fonte grise | Flange ingresso/uscita | Ghisa grigia |
| 48 | Stage casing | Stainless steel | Corps d'Etage | Acier inox | Camicia esterna | Acciaio inox |
| 56 | Pump head | Stainless steel | Tête de pompe | Acier inox | Testata pompa | Acciaio inox |
| 57 | Mechanical seal | Silicon carbide/silicon carbide | Garniture mécanique | Carbure de silicium/ carbure de silicium | Tenuta meccanica | Carburo di silicio/ carburo di silicio |
| 59 | Pump casing | Stainless steel | Corps de pomp | Acier inox | Corpo pompa | Acciaio inox |
| 62 | Base plate | Cast iron | Plaque de base | Fonte grise | Piastra base | Ghisa grigia |
| 82 | Seal ring | Rubber EPDM | Bague d'étanchéité | Caoutchouc EPDM | Anello di tenuta | Gomma EPDM |

Screws and nuts in stainless steel.

Vis et écrous en acier inox.

Viti e dadi in acciaio inox.

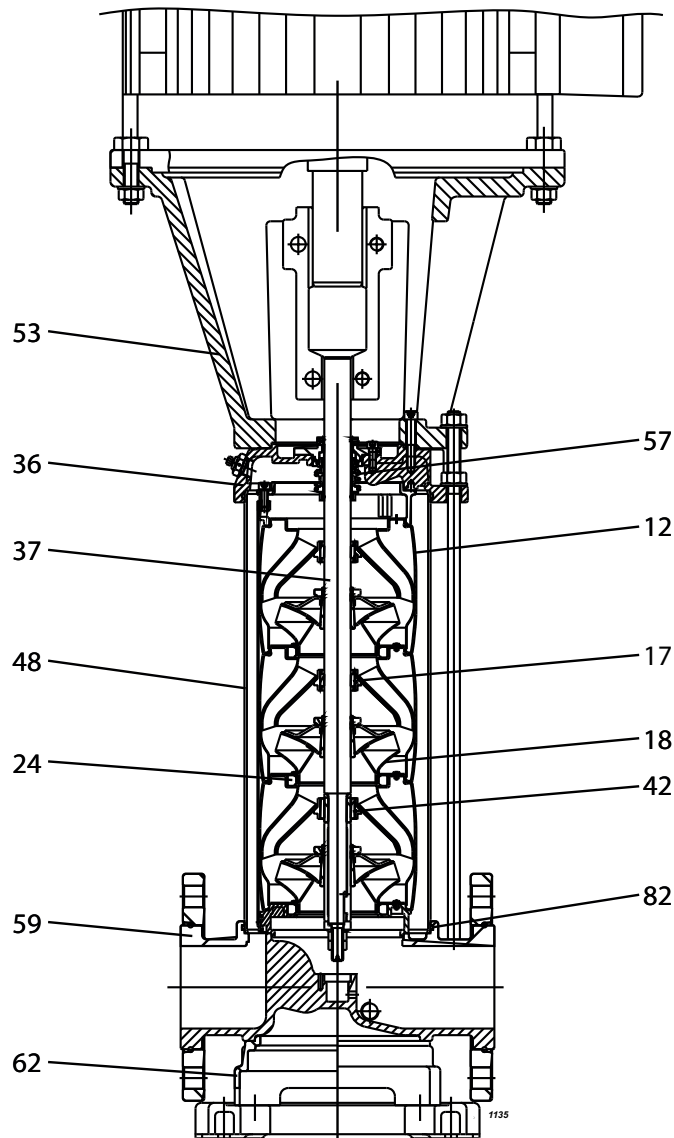


| Pos. | Parts | Materials | Nomenclature | Matériaux | Nomenclatura | Materiale |
|------|----------------------|---------------------------------------|------------------------------------|---|--------------------------|---|
| 12 | Diffuser | Stainless steel | Diffuseur | Acier inox | Diffusore | Acciaio inox |
| 17 | Intermediate bearing | Bronze | Roulement intermédiaire | Bronze | Cuscinetto intermedio | Bronzo |
| 18 | Impeller | Stainless steel | Roue | Acier inox | Girante | Acciaio inox |
| 24 | Impeller wear ring | PTFE | Bague d'usure | PTFE | Anello sede girante | PTFE |
| 36 | Pump head | Stainless steel | Tête de pompe | Acier inox | Testata pompa | Acciaio inox |
| 37 | Shaft | Stainless steel | Arbre | Acier inox | Albero | Acciaio inox |
| 42 | Bottom bearing | Tungsten carbide/ tungsten carbide | Roulement inférieur | Carbure de tungstène/ Carbure de tungstène | Cuscinetto inferiore | Carburo di tungsteno/ carburo di tungsteno |
| 45 | Inlet/Outlet Flanges | Cast iron | Brides d'aspiration et refoulement | Fonte grise | Flange ingresso/uscita | Ghisa grigia |
| 48 | Stage casing | Stainless steel | Corps d'Etage | Acier inox | Camicia esterna | Acciaio inox |
| 53 | Lantern bracket | Cast iron | Lanterne-support | Fonte grise | Supporto di collegamento | Ghisa grigia |
| 57 | Mechanical seal | Silicon carbide/silicon carbide | Garniture mécanique | Carbure de silicium/ carbure de silicium | Tenuta meccanica | Carburo di silicio/ carburo di silicio |
| 59 | Pump casing | Stainless steel | Corps de pomp | Acier inox | Corpo pompa | Acciaio inox |
| 62 | Base plate | Cast iron | Plaque de base | Fonte grise | Piastra base | Ghisa grigia |
| 82 | Seal ring | Rubber EPDM | Bague d'étanchéité | Caoutchouc EPDM | Anello di tenuta | Gomma EPDM |

Screws and nuts in stainless steel.

Vis et écrous en acier inox.

Viti e dadi in acciaio inox.

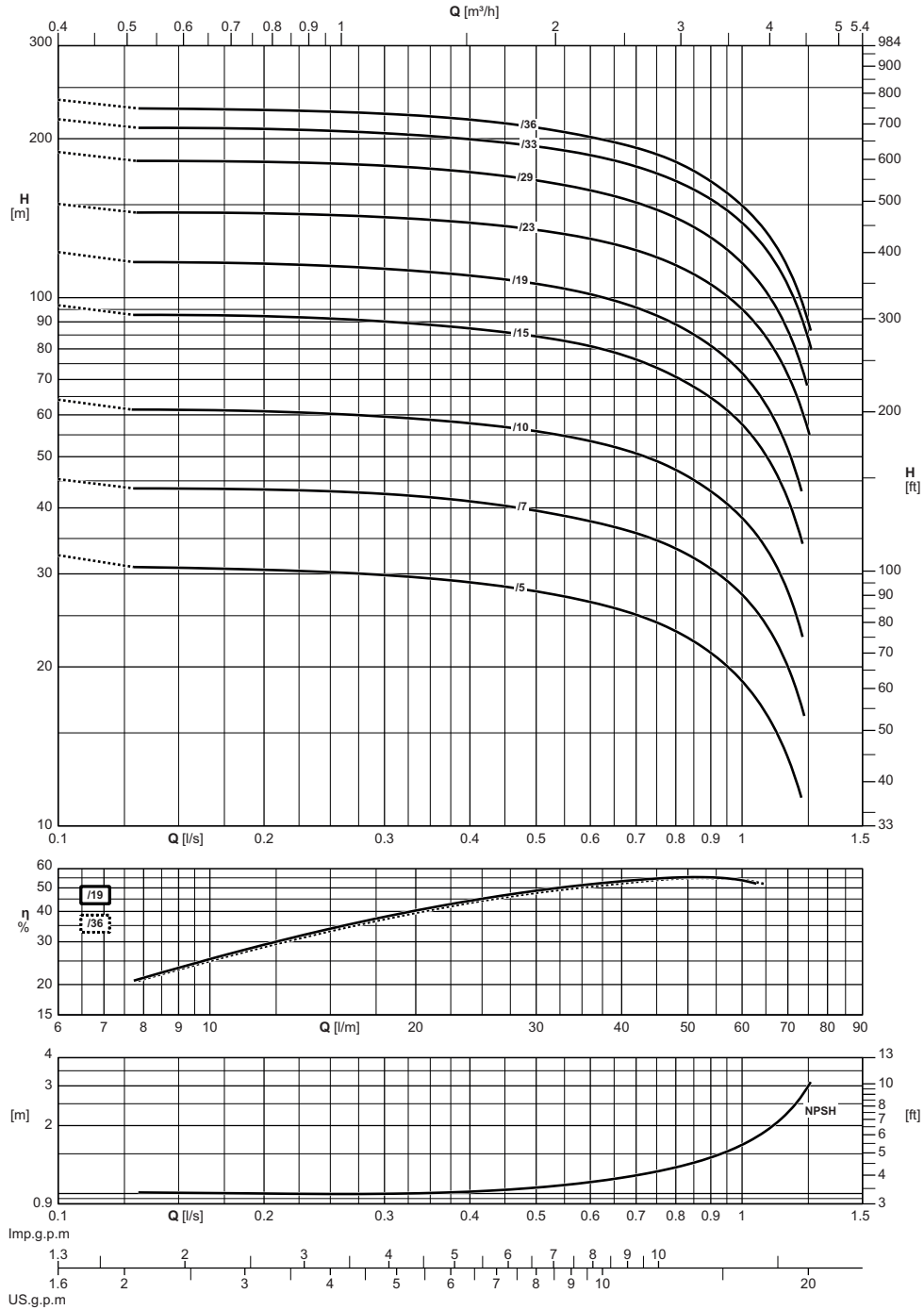


| Pos. | Parts | Materials | Nomenclature | Matériaux | Nomenclatura | Materiale |
|------|----------------------|---------------------------------------|------------------------------------|---|--------------------------|---|
| 12 | Diffuser | Stainless steel | Diffuseur | Acier inox | Diffusore | Acciaio inox |
| 17 | Intermediate bearing | Bronze | Roulement intermédiaire | Bronze | Cuscinetto intermedio | Bronzo |
| 18 | Impeller | Stainless steel | Roue | Acier inox | Girante | Acciaio inox |
| 24 | Impeller wear ring | PTFE | Bague d'usure | PTFE | Anello sede girante | PTFE |
| 36 | Pump head | Cast iron | Tête de pompe | Fonte grise | Testata pompa | Ghisa grigia |
| 37 | Shaft | Stainless steel | Arbre | Acier inox | Albero | Acciaio inox |
| 42 | Bottom bearing | Tungsten carbide/ tungsten carbide | Roulement inférieur | Carbure de tungstène/ Carbure de tungstène | Cuscinetto inferiore | Carburo di tungsteno/ carburo di tungsteno |
| 45 | Inlet/Outlet Flanges | Cast iron | Brides d'aspiration et refoulement | Fonte grise | Flange ingresso/uscita | Ghisa grigia |
| 48 | Stage casing | Stainless steel | Corps d'Etage | Acier inox | Camicia esterna | Acciaio inox |
| 53 | Lantern bracket | Cast iron | Lanterne-support | Fonte grise | Supporto di collegamento | Ghisa grigia |
| 57 | Mechanical seal | Silicon carbide/silicon carbide | Garniture mécanique | Carbure de silicium/ carbure de silicium | Tenuta meccanica | Carburo di silicio/ carburo di silicio |
| 59 | Pump casing | Cast iron | Corps de pomp | Fonte grise | Corpo pompa | Ghisa grigia |
| 62 | Base plate | Cast iron | Plaque de base | Fonte grise | Piastra base | Ghisa grigia |
| 82 | Seal ring | Rubber EPDM | Bague d'étanchéité | Caoutchouc EPDM | Anello di tenuta | Gomma EPDM |

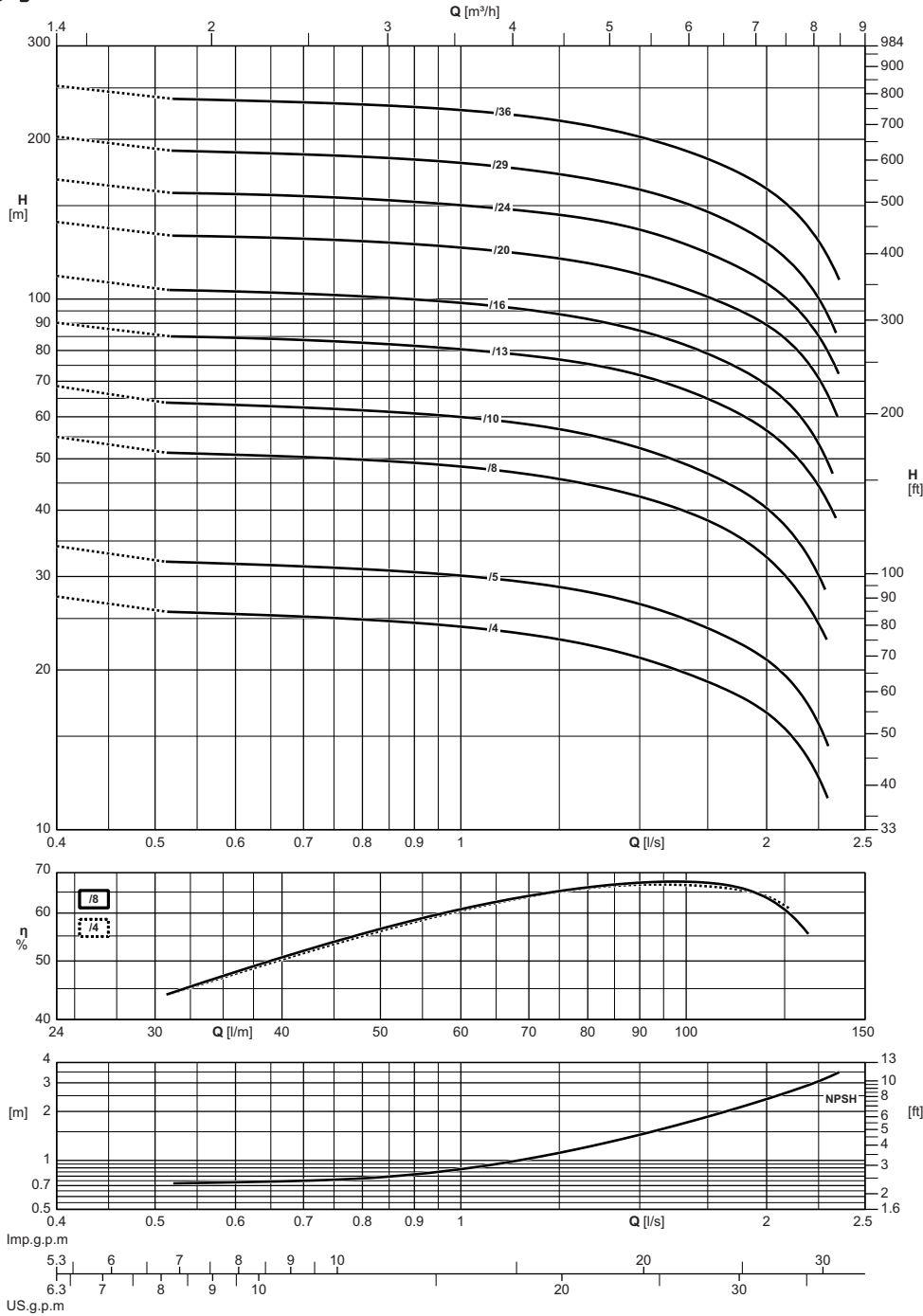
Screws and nuts in stainless steel.

Vis et écrous en acier inox.

Viti e dadi in acciaio inox.

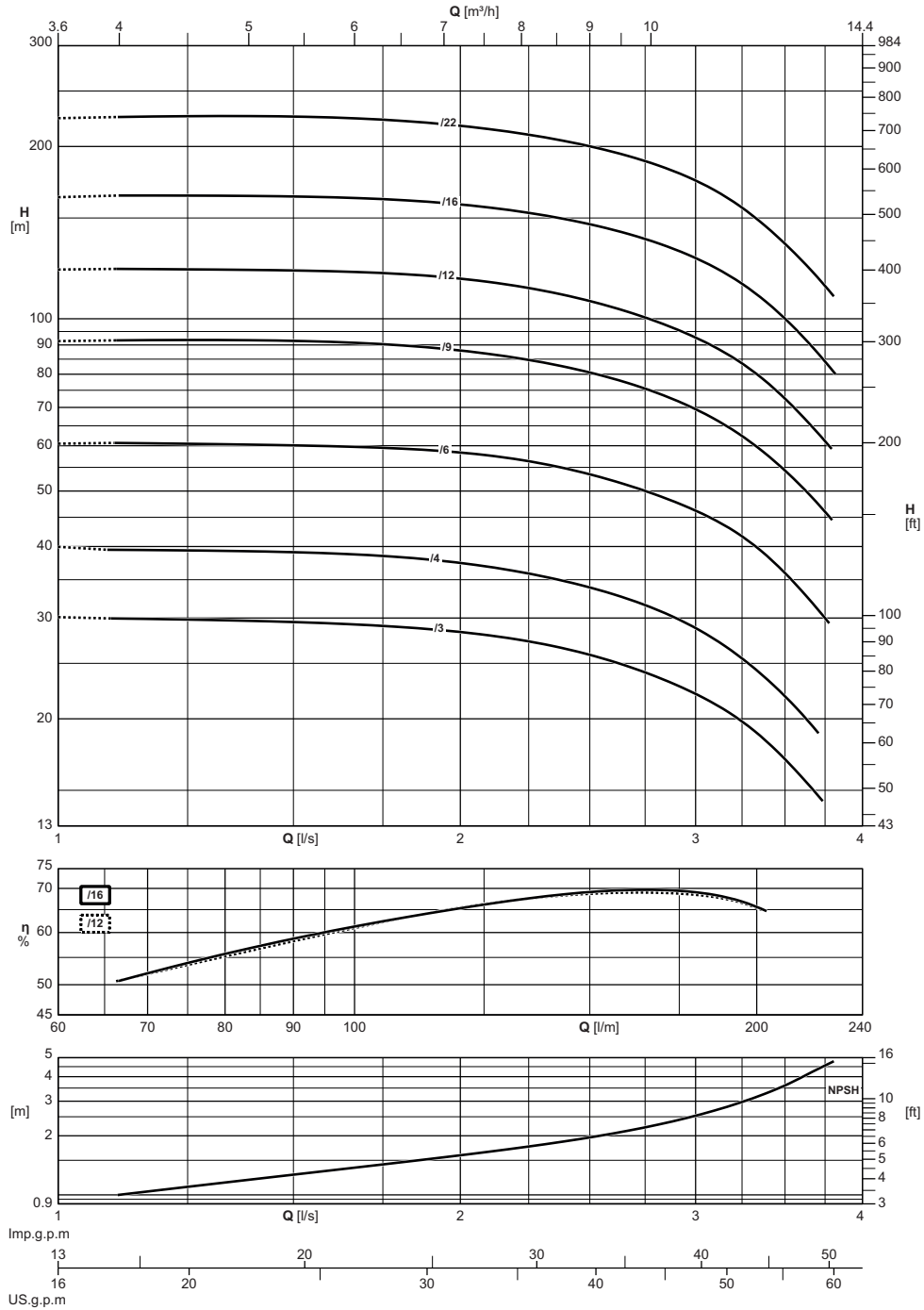


| Electric pump type <i>Electropompe type</i> Elektropompa tipo | | Motor power <i>Puiss. moteur</i> Potenza motore | | Capacity <i>Debit</i> Portata | | | | | | | | | | | | | | | | |
|--|--|--|------|---|---------------|------|-----|------|------|------|------|--|--|--|--|--|--|--|--|--|
| | | | | [l/s] | 0 | 0,2 | 0,4 | 0,6 | 0,8 | 1 | 1,2 | | | | | | | | | |
| | | | | [m³/h] | 0 | 0,7 | 1,4 | 2,2 | 2,9 | 3,6 | 4,3 | | | | | | | | | |
| | | | | [l/min] | 0 | 12 | 24 | 36 | 48 | 60 | 72 | | | | | | | | | |
| Single-phase <i>Monofasé</i> Monofase | Three-phase <i>Triphasé</i> Trifase | [kW] | [CV] | Total manometric head <i>Hauteur manometrique totale</i> Prevalenza manometrica totale | | | | | | | | | | | | | | | | |
| CVX031/5+E20037M210-V | CVX031/5+E20037T211-V | 0,37 | 0,5 | [m] | 32,5 | 30,5 | 29 | 26,5 | 23,5 | 19 | 12 | | | | | | | | | |
| CVX031/7+E20055M210-V | CVX031/7+E20055T211-V | 0,55 | 0,75 | [m] | 45,5 | 43,5 | 41 | 37,5 | 33,5 | 27,5 | 18 | | | | | | | | | |
| CVX031/10+E20075M210-V | CVX031/10+E30075T212-V | 0,75 | 1 | [m] | 64 | 61 | 58 | 54 | 47 | 38,5 | 25 | | | | | | | | | |
| CVX031/15+E20110M210-V | CVX031/15+E30110T212-V | 1,1 | 1,5 | [m] | 96 | 92 | 88 | 81 | 71 | 58 | 37,5 | | | | | | | | | |
| CVX031/19+E20150M210-V | CVX031/19+E30150T212-V | 1,5 | 2 | [m] | 122 | 116 | 110 | 102 | 89 | 72 | 46,5 | | | | | | | | | |
| CVX031/23+E20220M210-V | CVX031/23+E30220T212-V | 2,2 | 3 | [m] | 150 | 144 | 139 | 129 | 115 | 95 | 66 | | | | | | | | | |
| CVX031/29+E20220M210-V | CVX031/29+E30220T212-V | 2,2 | 3 | [m] | 188 | 181 | 173 | 160 | 142 | 116 | 79 | | | | | | | | | |
| | CVX031/33+E30300T212-V | 3 | 4 | [m] | 217 | 209 | 200 | 186 | 166 | 139 | 97 | | | | | | | | | |
| | CVX031/36+E30300T212-V | 3 | 4 | [m] | 237 | 227 | 217 | 202 | 181 | 149 | 105 | | | | | | | | | |
| NPSH | | | | [m] | | 1 | 1 | 1,1 | 1,3 | 1,6 | 2,5 | | | | | | | | | |
| | | | | | M.E.I. ≥ 0.40 | | | | | | | | | | | | | | | |



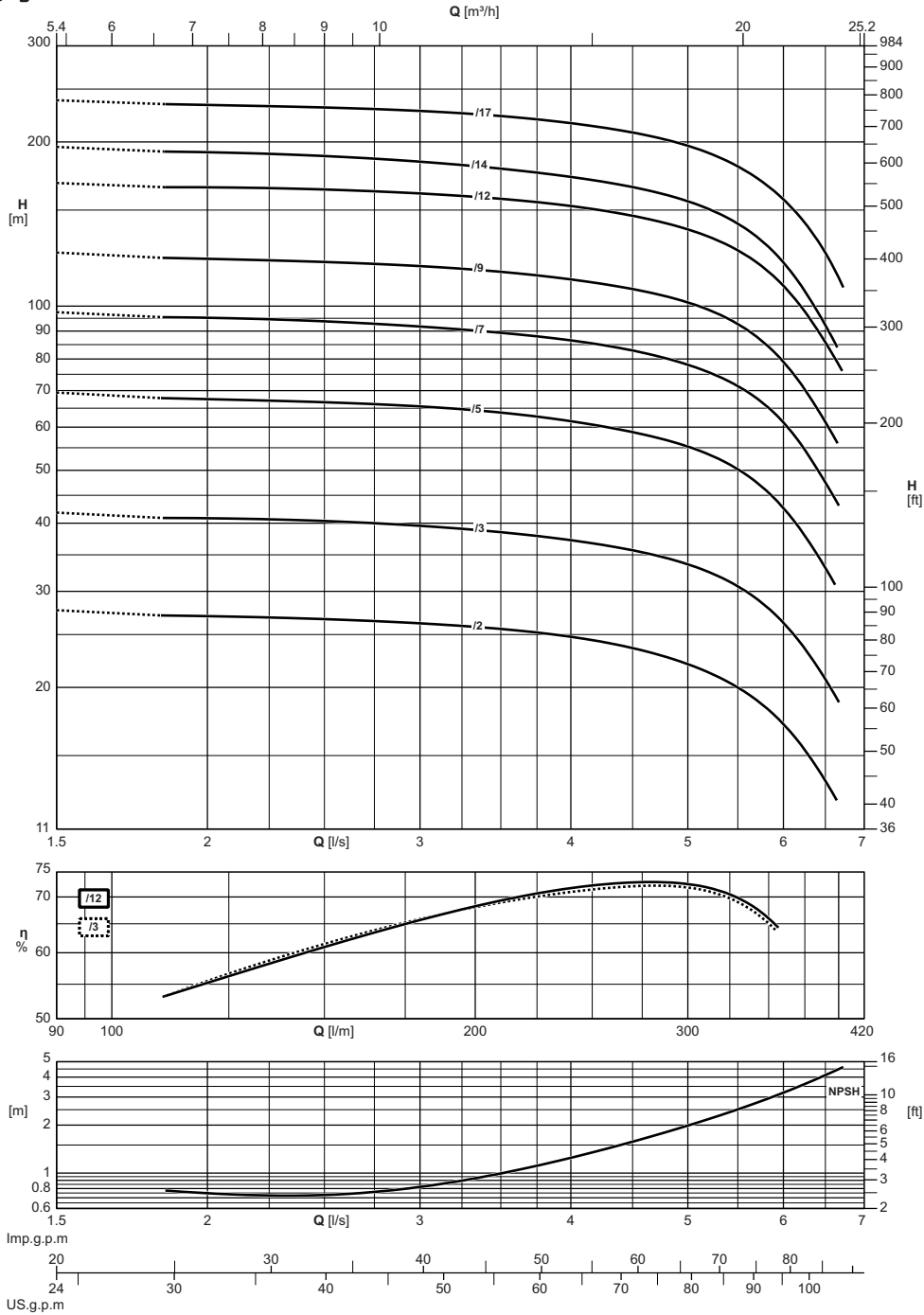
| Electric pump type Electropompe type Elettropompa tipo | | Motor power Puiss. moteur Potenza motore | | Capacity Débit Portata | | | | | | | | | | | | | |
|--|-------------------------|--|------|---|------|------|-----|------|------|------|------|------|------|--|--|--|--|
| | | | | [l/s] | 0 | 0,6 | 0,8 | 1 | 1,2 | 1,4 | 1,6 | 1,8 | 2 | | | | |
| Single-phase Monofasé | Three-phase Triphasé | [kW] | [CV] | [m³/h] | 0 | 2,2 | 2,9 | 3,6 | 4,3 | 5 | 5,8 | 6,5 | 7,2 | | | | |
| | | | | [l/min] | 0 | 36 | 48 | 60 | 72 | 84 | 96 | 108 | 120 | | | | |
| | | | | Total manometric head Hauteur manométrique totale Prevalenza manometrica totale | | | | | | | | | | | | | |
| | | | | [m] | 27,5 | 25,5 | 25 | 24 | 23 | 22 | 20,5 | 18,5 | 16,5 | | | | |
| CVX051/4+E20055M210-V | CVX051/4+E20055T211-V | 0,55 | 0,75 | [m] | 27,5 | 25,5 | 25 | 24 | 23 | 22 | 20,5 | 18,5 | 16,5 | | | | |
| CVX051/5+E20075M210-V | CVX051/5+E30075T212-V | 0,75 | 1 | [m] | 34 | 31,5 | 31 | 30 | 29 | 27,5 | 25,5 | 23,5 | 21 | | | | |
| CVX051/8+E20110M210-V | CVX051/8+E30110T212-V | 1,1 | 1,5 | [m] | 55 | 51 | 50 | 48,5 | 46,5 | 44 | 41 | 37,5 | 32,5 | | | | |
| CVX051/10+E20150M210-V | CVX051/10+E30150T212-V | 1,5 | 2 | [m] | 68 | 63 | 62 | 60 | 58 | 54 | 50 | 45,5 | 40,5 | | | | |
| CVX051/13+E20220M210-V | CVX051/13+E30220T212-V | 2,2 | 3 | [m] | 90 | 85 | 83 | 80 | 78 | 74 | 69 | 63 | 57 | | | | |
| CVX051/16+E20220M210-V | CVX051/16+E30220T212-V | 2,2 | 3 | [m] | 110 | 103 | 101 | 98 | 95 | 90 | 84 | 77 | 69 | | | | |
| | CVX051/20+E30300T212-V | 3 | 4 | [m] | 139 | 131 | 129 | 125 | 121 | 115 | 107 | 99 | 89 | | | | |
| | CVX051/24+E30400T212-V | 4 | 5,5 | [m] | 168 | 158 | 155 | 150 | 146 | 139 | 130 | 119 | 107 | | | | |
| | CVX051/29+E30400T212-V | 4 | 5,5 | [m] | 202 | 189 | 185 | 181 | 174 | 166 | 155 | 143 | 127 | | | | |
| | CVX051/36+E30550T222-V | 5,5 | 7,5 | [m] | 252 | 237 | 233 | 227 | 219 | 209 | 195 | 180 | 161 | | | | |
| NPSH | | | | [m] | 0,7 | 0,8 | 0,9 | 1,1 | 1,3 | 1,6 | 2 | 2,4 | | | | | |

M.E.I. ≥ 0,40



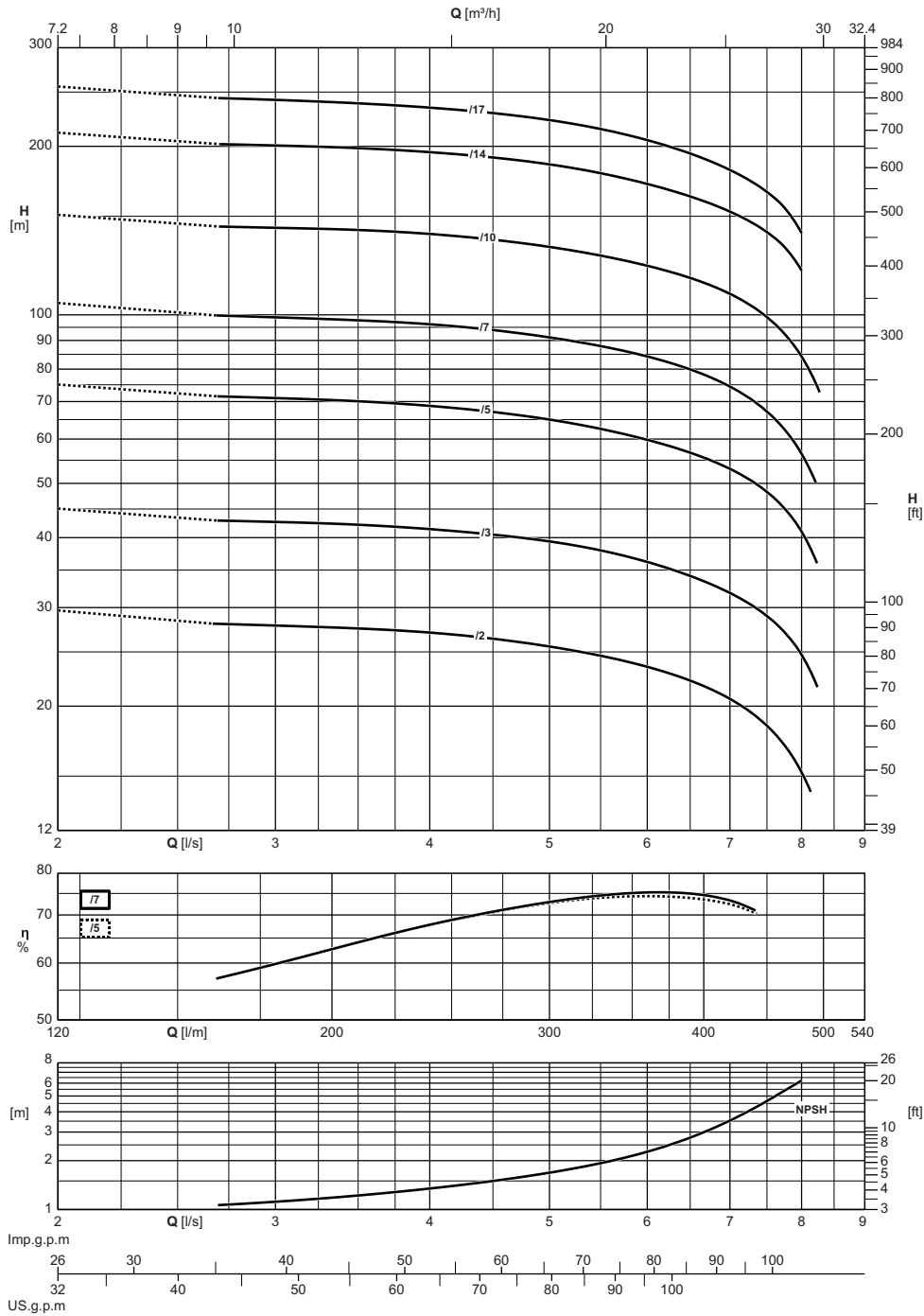
| Electric pump type <i>Electropompe type</i> <i>Elettropompa tipo</i> | | Motor power <i>Puiss. moteur</i> Potenza motore | | Capacity <i>Debit</i> Portata | | | | | | | | | | | | | | |
|--|--|--|------|---|-----|------|------|------|------|------|------|------|------|------|--|--|--|--|
| | | | | [l/s] | 0 | 1,2 | 1,4 | 1,6 | 1,8 | 2 | 2,4 | 2,8 | 3,2 | 3,6 | | | | |
| Single-phase <i>Monophasé</i> Monofase | Three-phase <i>Triphasé</i> Trifase | [kW] | [CV] | [m³/h] | 0 | 4,3 | 5 | 5,8 | 6,5 | 7,2 | 8,6 | 10,1 | 11,5 | 13 | | | | |
| | | | | [l/min] | 0 | 72 | 84 | 96 | 108 | 120 | 144 | 168 | 192 | 216 | | | | |
| | | | | Total manometric head <i>Hauteur manométrique totale</i> Prevalenza manometrica totale | | | | | | | | | | | | | | |
| | | | | [m] | 30 | 30 | 29,5 | 29,5 | 29 | 28,5 | 26,5 | 23,5 | 20,5 | 16 | | | | |
| CVX101/3+E20110M210-V | CVX101/3+E30110T212-V | 1,1 | 1,5 | [m] | 30 | 30 | 29,5 | 29,5 | 29 | 28,5 | 26,5 | 23,5 | 20,5 | 16 | | | | |
| CVX101/4+E20150M210-V | CVX101/4+E30150T212-V | 1,5 | 2 | [m] | 40 | 39,5 | 39 | 39 | 38,5 | 37,5 | 34,5 | 31 | 26 | 20,5 | | | | |
| CVX101/6+E20220M210-V | CVX101/6+E30220T212-V | 2,2 | 3 | [m] | 60 | 61 | 60 | 60 | 59 | 58 | 55 | 49,5 | 42,5 | 33,5 | | | | |
| | CVX101/9+E30300T212-V | 3 | 4 | [m] | 91 | 92 | 92 | 91 | 90 | 88 | 82 | 74 | 64 | 51 | | | | |
| | CVX101/12+E30400T212-V | 4 | 5,5 | [m] | 121 | 122 | 122 | 121 | 120 | 118 | 110 | 99 | 86 | 68 | | | | |
| | CVX101/16+E30550T222-V | 5,5 | 7,5 | [m] | 163 | 164 | 164 | 163 | 161 | 158 | 149 | 136 | 118 | 94 | | | | |
| | CVX101/22+E30750T222-V | 7,5 | 10 | [m] | 224 | 226 | 226 | 225 | 222 | 217 | 204 | 186 | 160 | 127 | | | | |
| NPSH | | | | [m] | | 1,1 | 1,2 | 1,3 | 1,5 | 1,6 | 1,9 | 2,3 | 2,9 | 4 | | | | |

M.E.I. ≥ 0.40



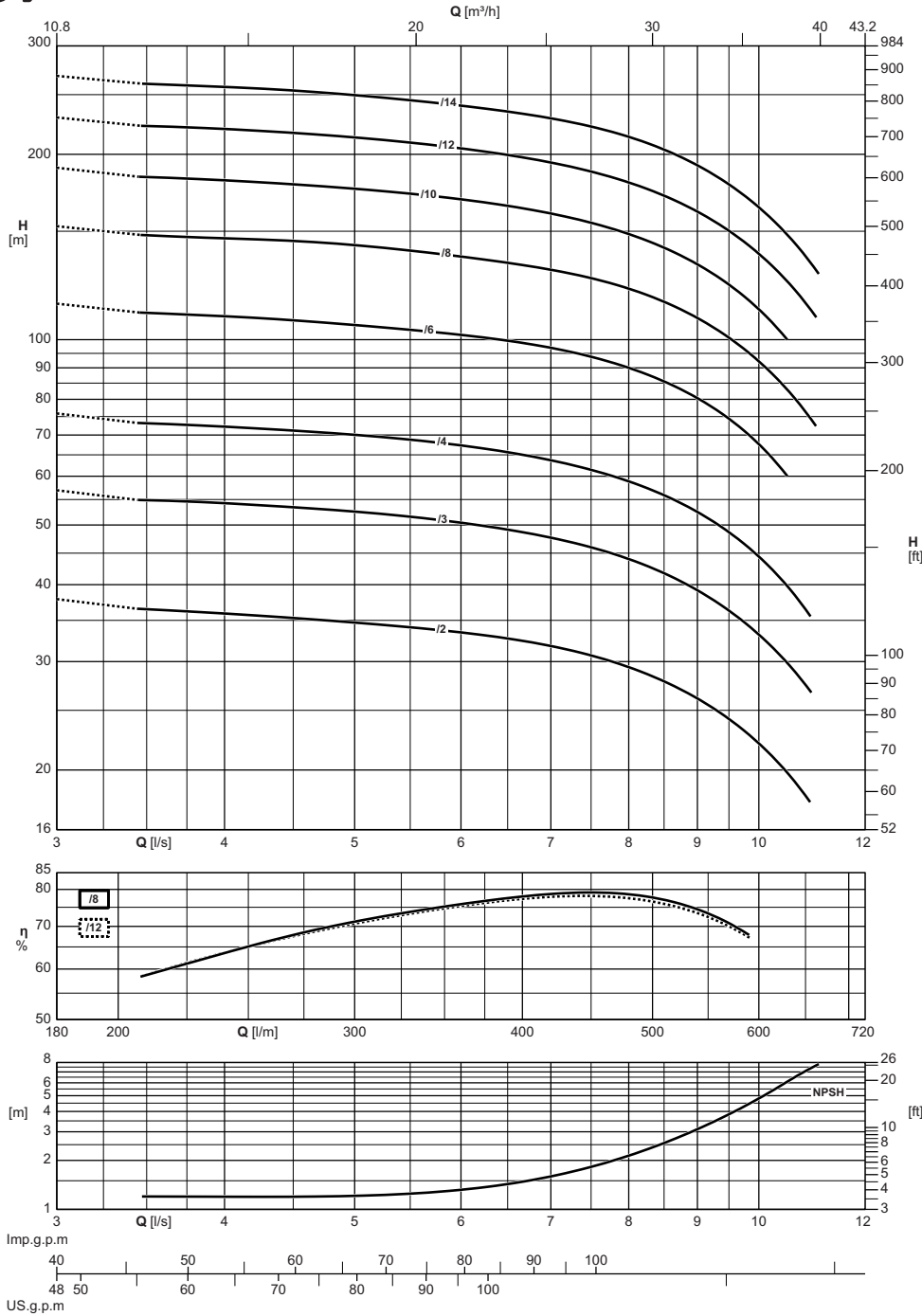
| Electric pump type <i>Electropompe type</i> Elettropompa tipo | | Motor power <i>Puiss. moteur</i> Potenza motore | | Capacity <i>Debit</i> Portata | | | | | | | | | | | | | | |
|---|---|---|------|--|------|------|-----|------|------|------|------|------|------|------|--|--|--|--|
| | | | | [l/s] | 0 | 1,8 | 2 | 2,4 | 2,8 | 3,2 | 3,6 | 4 | 5 | 6 | | | | |
| Single-phase <i>Monophasé</i> Monofase | Three-phase <i>Triphasé</i> Trifase | [kW] | [CV] | [m³/h] | 0 | 6,5 | 7,2 | 8,6 | 10,1 | 11,5 | 13 | 14,4 | 18 | 21,5 | | | | |
| | | | | [l/min] | 0 | 108 | 120 | 144 | 168 | 192 | 216 | 240 | 300 | 360 | | | | |
| | | | | Total manometric head <i>Hauteur manométrique totale</i> Prevalenza manometrica totale | | | | | | | | | | | | | | |
| | | | | [m] | 27,5 | 26,5 | 27 | 27 | 26,5 | 26 | 25,5 | 25 | 22 | 17 | | | | |
| | CVX151/2+E30220T212-V | 2,2 | 3 | [m] | 42 | 40 | 41 | 40,5 | 40 | 39 | 38,5 | 37 | 33,5 | 26 | | | | |
| | CVX151/3+E30300T212-V | 3 | 4 | [m] | 69 | 67 | 68 | 67 | 66 | 65 | 63 | 62 | 55 | 42,5 | | | | |
| | CVX151/5+E30400T212-V | 4 | 5,5 | [m] | 97 | 94 | 95 | 94 | 93 | 91 | 89 | 87 | 78 | 61 | | | | |
| | CVX151/7+E30550T222-V | 5,5 | 7,5 | [m] | 125 | 120 | 122 | 121 | 119 | 117 | 115 | 112 | 102 | 79 | | | | |
| | CVX151/9+E30750T222-V | 7,5 | 10 | [m] | 168 | 161 | 165 | 164 | 162 | 160 | 156 | 153 | 138 | 109 | | | | |
| | CVX151/12+E31100T222-V | 11 | 15 | [m] | 195 | 188 | 191 | 189 | 186 | 182 | 178 | 173 | 156 | 120 | | | | |
| | CVX151/14+E31100T222-V | 11 | 15 | [m] | 238 | 229 | 234 | 232 | 229 | 226 | 222 | 216 | 197 | 157 | | | | |
| | CVX151/17+E31500T222-V | 15 | 20 | [m] | | 0,8 | 0,8 | 0,7 | 0,8 | 0,9 | 1 | 1,2 | 2 | 3,2 | | | | |
| NPSH | | | | [m] | | 0,8 | 0,8 | 0,7 | 0,8 | 0,9 | 1 | 1,2 | 2 | 3,2 | | | | |

M.E.I. ≥ 0.40



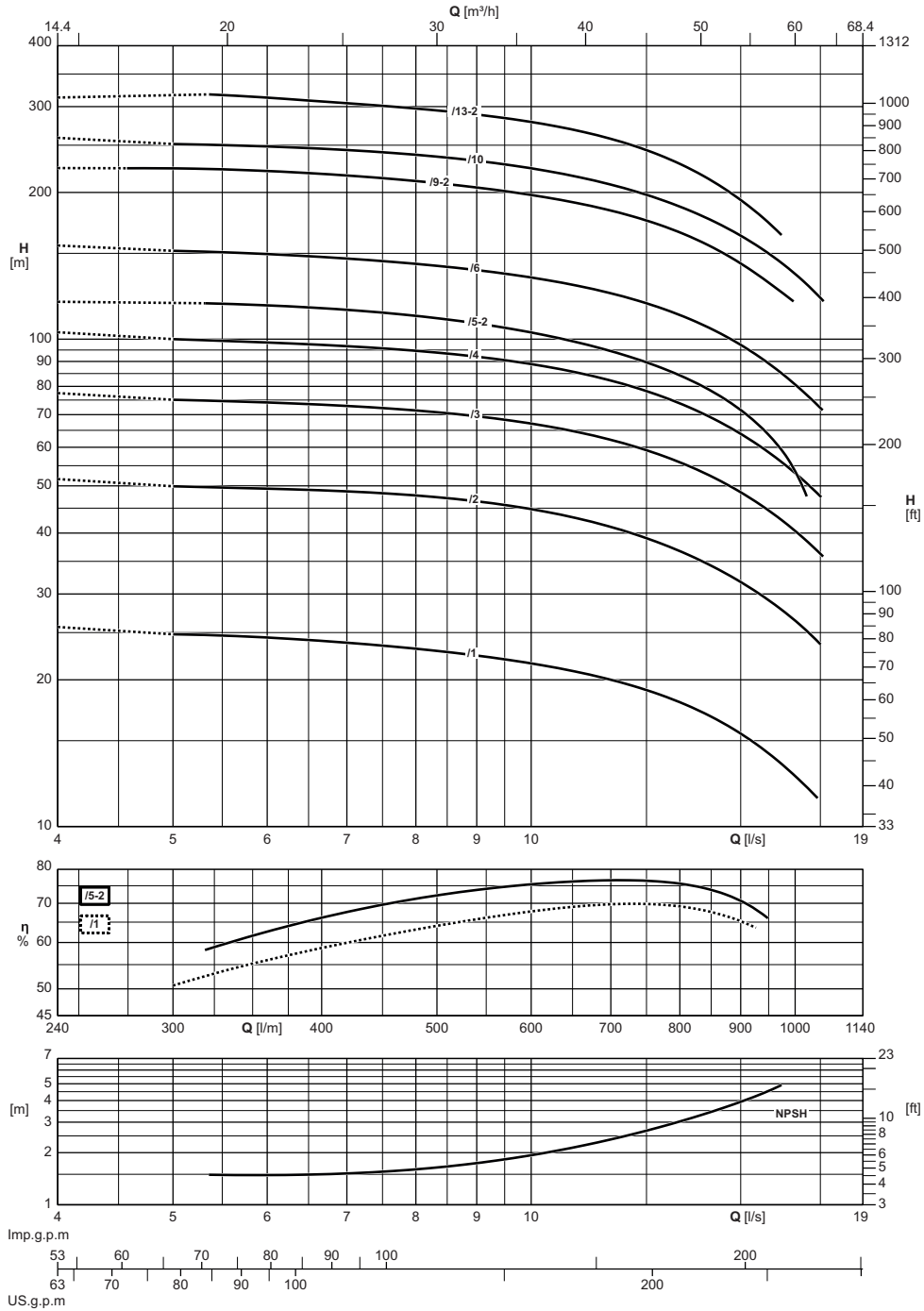
| Electric pump type <i>Electropompe type</i> Elettropompa tipo | | Motor power <i>Puiss. moteur</i> Potenza motore | | Capacity <i>Debit</i> Portata | | | | | | | | | | | | | |
|---|---|---|------|--|------|------|------|------|------|------|------|------|------|--|--|--|--|
| | | | | [l/s] | 0 | 2,8 | 3,2 | 3,6 | 4 | 5 | 6 | 7 | 8 | | | | |
| | | | | [m³/h] | 0 | 10,1 | 11,5 | 13 | 14,4 | 18 | 21,5 | 25 | 29 | | | | |
| | | | | [l/min] | 0 | 168 | 192 | 216 | 240 | 300 | 360 | 420 | 480 | | | | |
| Single-phase <i>Monophasé</i> Monofase | Three-phase <i>Triphasé</i> Trifase | [kW] | [CV] | Total manometric head <i>Hauteur manométrique totale</i> Prevalenza manometrica totale | | | | | | | | | | | | | |
| | | | | [m] | 29,5 | 28 | 27,5 | 27,5 | 27 | 25,5 | 23,5 | 20,5 | 15 | | | | |
| | CVX201/2+E30220T212-V | 2,2 | 3 | [m] | 45 | 43 | 42,5 | 42 | 41,5 | 39,5 | 36 | 32 | 24,5 | | | | |
| | CVX201/3+E30400T212-V | 4 | 5,5 | [m] | 75 | 71 | 71 | 70 | 69 | 65 | 60 | 53 | 41 | | | | |
| | CVX201/5+E30550T222-V | 5,5 | 7,5 | [m] | 105 | 100 | 99 | 98 | 96 | 91 | 84 | 74 | 56 | | | | |
| | CVX201/10+E31100T222-V | 11 | 15 | [m] | 150 | 144 | 143 | 141 | 139 | 132 | 122 | 109 | 84 | | | | |
| | CVX201/14+E31500T222-V | 15 | 20 | [m] | 211 | 201 | 200 | 198 | 195 | 186 | 171 | 153 | 120 | | | | |
| | CVX201/17+E31850T222-V | 18,5 | 25 | [m] | 255 | 243 | 241 | 238 | 235 | 223 | 205 | 181 | 140 | | | | |
| NPSH | | | | [m] | | 1,1 | 1,2 | 1,2 | 1,3 | 1,7 | 2,3 | 3,5 | 6,2 | | | | |

M.E.I. ≥ 0.40

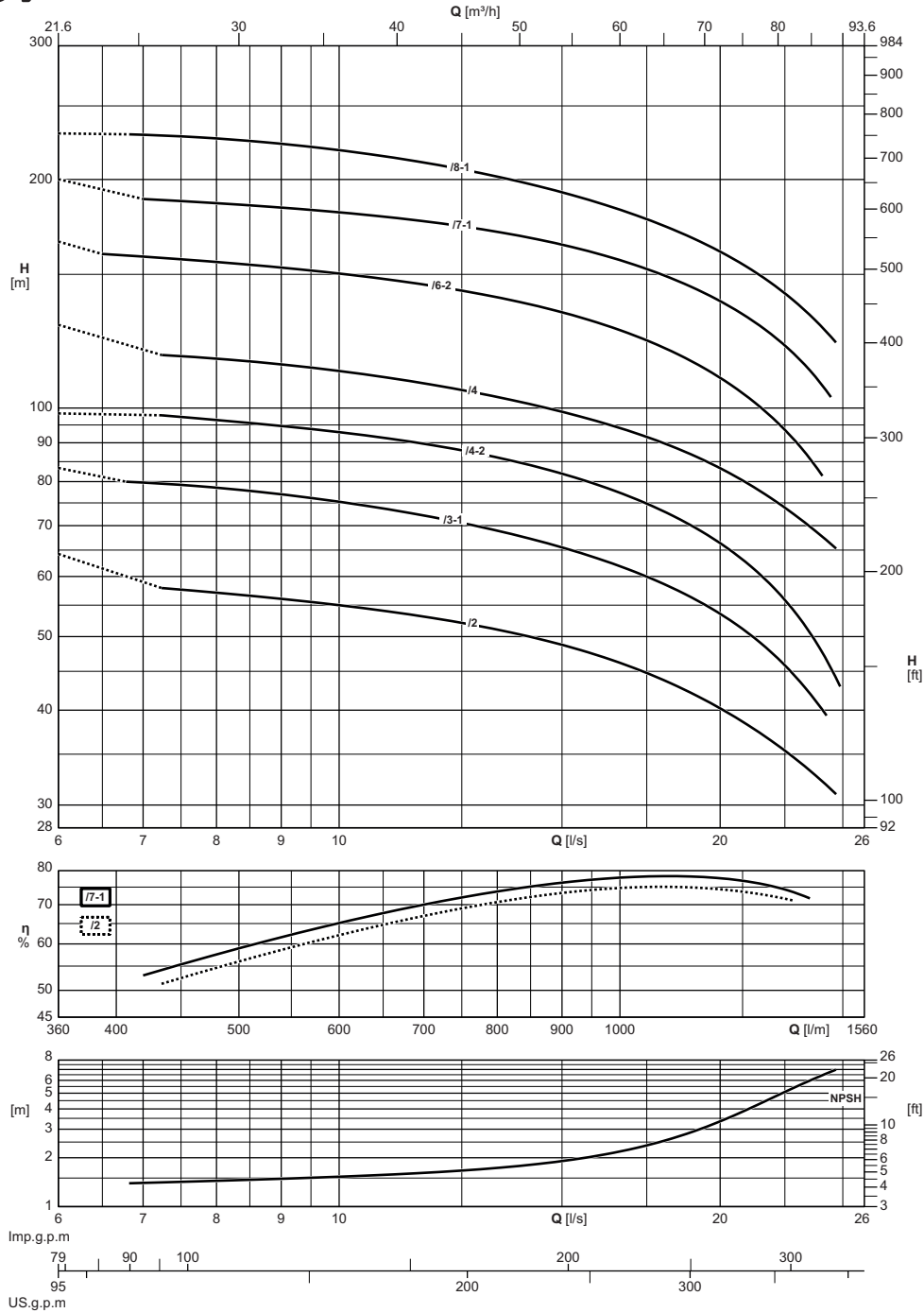


| Electric pump type <i>Electropompe type</i> Elettropompa tipo | | Motor power <i>Puiss. moteur</i> Potenza motore | | Capacity <i>Debit</i> Portata | | | | | | | | | | | | |
|---|---|---|------|--|-----|------|------|------|------|------|------|-----|------|--|--|--|
| | | | | [l/s] | 0 | 3,6 | 4 | 5 | 6 | 7 | 8 | 9 | 10 | | | |
| | | | | [m³/h] | 0 | 13 | 14,4 | 18 | 21,5 | 25 | 29 | 32 | 36 | | | |
| | | | | [l/min] | 0 | 216 | 240 | 300 | 360 | 420 | 480 | 540 | 600 | | | |
| Single-phase <i>Monofasé</i> Monofase | Three-phase <i>Triphasé</i> Trifase | [kW] | [CV] | Total manometric head <i>Hauteur manometrique totale</i> Prevalenza manometrica totale | | | | | | | | | | | | |
| | | | | [m] | 38 | 36,5 | 36 | 34,5 | 33,5 | 32 | 29,5 | 26 | 22 | | | |
| | CVX321/2+E30400T212-V | 4 | 5,5 | [m] | 38 | 36,5 | 36 | 34,5 | 33,5 | 32 | 29,5 | 26 | 22 | | | |
| | CVX321/3+E30550T222-V | 5,5 | 7,5 | [m] | 56 | 55 | 54 | 53 | 50 | 47,5 | 44 | 39 | 33 | | | |
| | CVX321/4+E30750T222-V | 7,5 | 10 | [m] | 75 | 73 | 72 | 70 | 67 | 64 | 59 | 53 | 44,5 | | | |
| | CVX321/6+E31100T222-V | 11 | 15 | [m] | 114 | 110 | 109 | 106 | 102 | 97 | 90 | 80 | 68 | | | |
| | CVX321/8+E31500T222-V | 15 | 20 | [m] | 152 | 147 | 146 | 142 | 136 | 130 | 121 | 108 | 92 | | | |
| | CVX321/10+E31850T222-V | 18,5 | 25 | [m] | 190 | 183 | 181 | 176 | 169 | 160 | 148 | 133 | 112 | | | |
| | CVX321/12+E32200T222-V | 22 | 30 | [m] | 229 | 222 | 220 | 213 | 204 | 194 | 180 | 161 | 138 | | | |
| | CVX321/14+E33000T222-V | 30 | 40 | [m] | 268 | 260 | 257 | 250 | 240 | 229 | 213 | 192 | 164 | | | |
| NPSH | | | | [m] | | 1,2 | 1,2 | 1,2 | 1,3 | 1,6 | 2,1 | 3,1 | 4,8 | | | |

M.E.I. ≥ 0.40

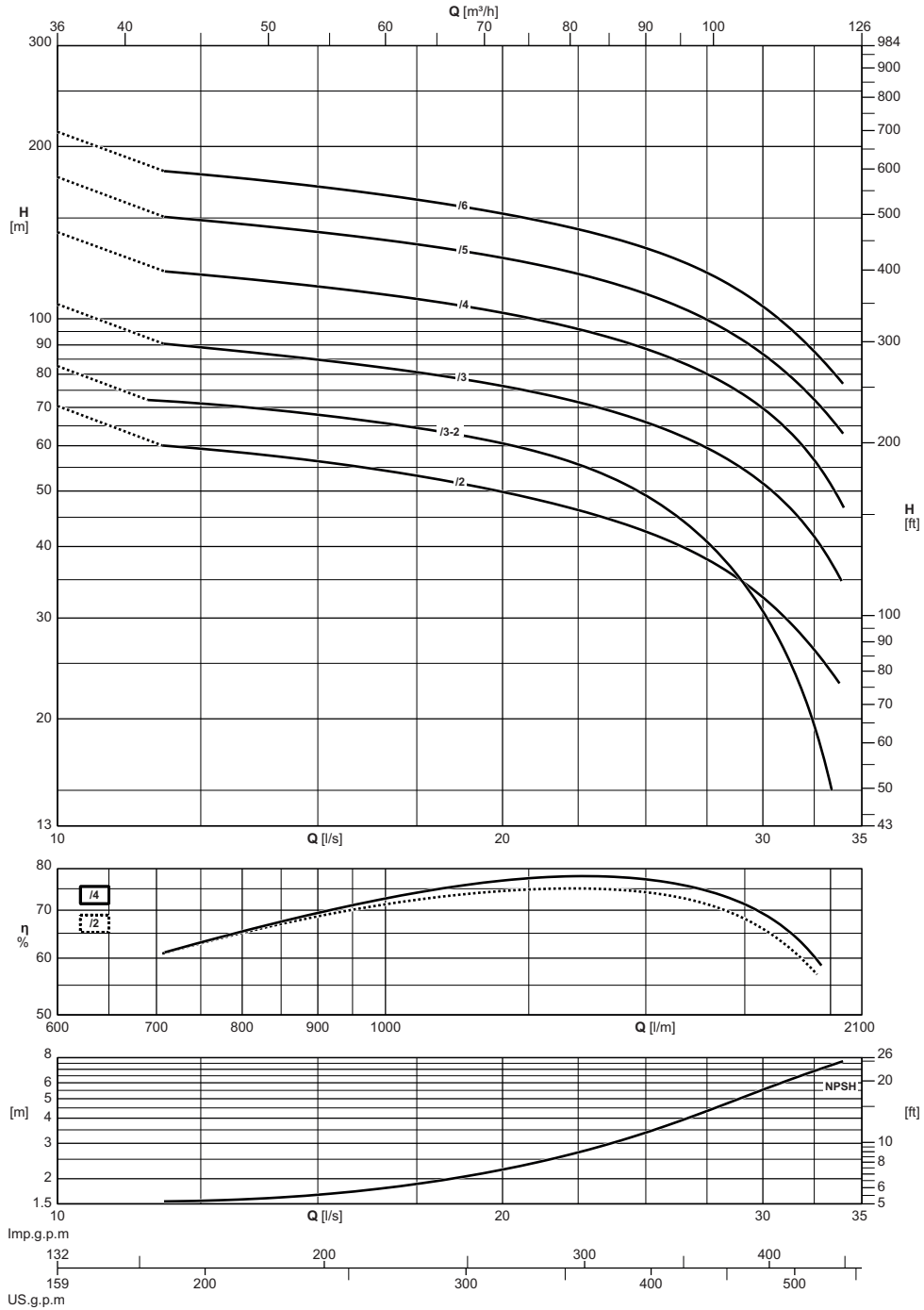


| Electric pump type Electropompe type Elettropompa tipo | | Motor power Puiss. moteur Potenza motore | | Capacity Debit Portata | | | | | | | | | | | | | | | | |
|--|----------------------------|--|-----|------------------------------|-----|------|------|---|------|------|------|------|------|------|------|------|------|------|----|------|
| | | | | [l/s] | 0 | 5 | 6 | 7 | 8 | 9 | 10 | 11 | 12 | 13 | 14 | 15 | 16 | | | |
| | | | | [m³/h] | 0 | 18 | 21,5 | 25 | 29 | 32 | 36 | 40 | 43 | 47 | 50 | 54 | 58 | | | |
| | | [l/min] | 0 | 300 | 360 | 420 | 480 | 540 | 600 | 660 | 720 | 780 | 840 | 900 | 960 | | | | | |
| Single-phase Monofasé Monofase | | Three-phase Triphasé Trifase | | [kW] | | [CV] | | Total manometric head Hauteur manométrique totale Prevalenza manometrica totale | | | | | | | | | | | | |
| | | | | | | | | [m] | 25,5 | 25 | 24,5 | 24 | 23 | 22,5 | 21,5 | 20,5 | 19,5 | 18,5 | 17 | 15,5 |
| | CVX451/1+E30400T212-V/G | 4 | 5,5 | [m] | 51 | 50 | 49,5 | 48,5 | 48 | 46,5 | 45 | 42,5 | 40,5 | 37,5 | 35 | 31,5 | 28,5 | | | |
| | CVX451/2+E30750T222-V/G | 7,5 | 10 | [m] | 77 | 75 | 74 | 73 | 71 | 70 | 67 | 64 | 61 | 57 | 53 | 48,5 | 43,5 | | | |
| | CVX451/3+E31100T222-V/G | 11 | 15 | [m] | 103 | 100 | 98 | 97 | 95 | 92 | 89 | 85 | 81 | 76 | 70 | 64 | 58 | | | |
| | CVX451/4+E31500T222-V/G | 15 | 20 | [m] | 119 | 111 | 117 | 115 | 112 | 108 | 103 | 98 | 93 | 86 | 80 | 72 | 62 | | | |
| | CVX451/5-2+E31850T222-V/G | 18,5 | 25 | [m] | 155 | 152 | 149 | 146 | 143 | 139 | 134 | 128 | 122 | 115 | 106 | 97 | 88 | | | |
| | CVX451/6+E32200T222-V/G | 22 | 30 | [m] | 224 | 224 | 221 | 217 | 211 | 205 | 198 | 190 | 180 | 170 | 157 | 143 | 128 | | | |
| | CVX451/9-2+E33000T222-V/G | 30 | 40 | [m] | 258 | 251 | 249 | 244 | 239 | 232 | 224 | 215 | 204 | 191 | 178 | 163 | 147 | | | |
| | CVX451/10+E33700T222-V/G | 37 | 50 | [m] | 313 | 297 | 313 | 305 | 297 | 289 | 279 | 267 | 252 | 235 | 215 | 193 | 169 | | | |
| | CVX451/13-2+E34500T222-V/G | 45 | 60 | [m] | | 1,4 | 1,5 | 1,5 | 1,6 | 1,7 | 1,9 | 2,2 | 2,5 | 2,9 | 3,4 | 3,9 | 4,7 | | | |
| NPSH | | | | [m] | | | | | | | | | | | | | | | | |
| M.E.I. ≥ 0.40 | | | | | | | | | | | | | | | | | | | | |



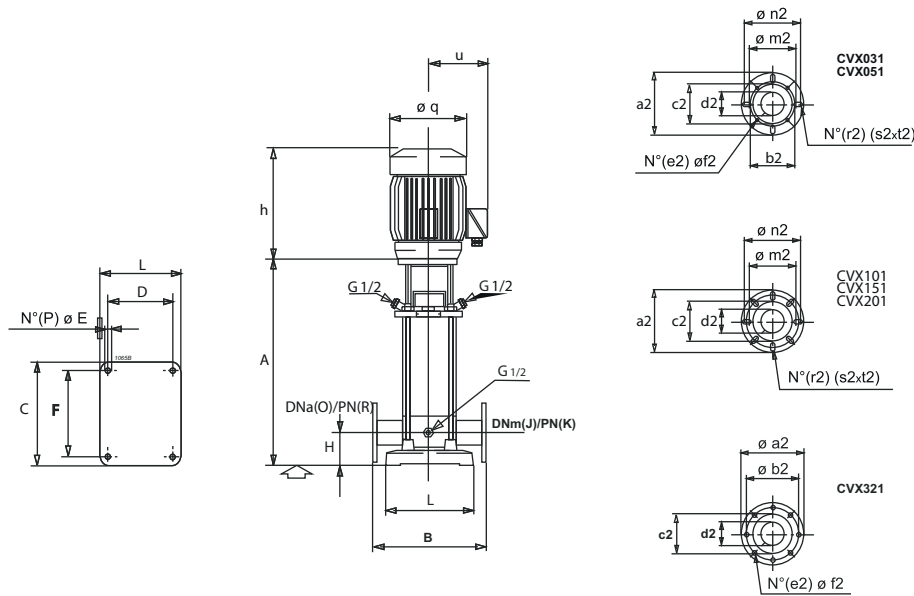
| Electric pump type <i>Electropompe type</i> Elettropompa tipo | | Motor power <i>Puiss. moteur</i> Potenza motore | | Capacity <i>Debit</i> Portata | | | | | | | | | | | | | | |
|--|--|--|------|---|-----|-----|-----|-----|-----|-----|-----|-----|-----|-----|------|------|--|--|
| | | | | [l/s] | 0 | 7 | 8 | 9 | 10 | 12 | 14 | 16 | 18 | 20 | 22 | 24 | | |
| | | | | [m³/h] | 0 | 25 | 29 | 32 | 36 | 43 | 50 | 58 | 65 | 72 | 79 | 86 | | |
| Single-phase <i>Monofasé</i> Monofase | Three-phase <i>Triphasé</i> Trifase | [kW] | [CV] | Total manometric head <i>Hauteur manométrique totale</i> Prevalenza manometrica totale | | | | | | | | | | | | | | |
| | | | | [m] | 64 | 56 | 57 | 56 | 55 | 53 | 50 | 47 | 44 | 40 | 36,5 | 32,5 | | |
| | CVX641/2+E31100T222-V/G | 11 | 15 | [m] | 64 | 56 | 57 | 56 | 55 | 53 | 50 | 47 | 44 | 40 | 36,5 | 32,5 | | |
| | CVX641/3-1+E31500T222-V/G | 15 | 20 | [m] | 83 | 80 | 79 | 77 | 75 | 72 | 68 | 63 | 59 | 54 | 47,5 | 40,5 | | |
| | CVX641/4+E32200T222-V/G | 22 | 30 | [m] | 128 | 114 | 116 | 114 | 112 | 107 | 102 | 96 | 90 | 83 | 76 | 68 | | |
| | CVX641/4-2+E31850T222-V/G | 18,5 | 25 | [m] | 98 | 95 | 96 | 95 | 93 | 89 | 85 | 79 | 73 | 66 | 58 | 48 | | |
| | CVX641/6-2+E33000T222-V/G | 30 | 40 | [m] | 165 | 158 | 156 | 153 | 150 | 144 | 138 | 130 | 120 | 110 | 97 | 82 | | |
| | CVX641/7-1+E33700T222-V/G | 37 | 50 | [m] | 200 | 189 | 186 | 184 | 181 | 175 | 168 | 160 | 150 | 138 | 125 | 108 | | |
| | CVX641/8-1+E34500T222-V/G | 45 | 60 | [m] | 230 | 229 | 226 | 223 | 219 | 209 | 198 | 187 | 174 | 161 | 146 | 128 | | |
| NPSH | | | | [m] | | 1,4 | 1,4 | 1,5 | 1,5 | 1,6 | 1,8 | 2,1 | 2,5 | 3,4 | 4,7 | 6,4 | | |

M.E.I. ≥ 0.40

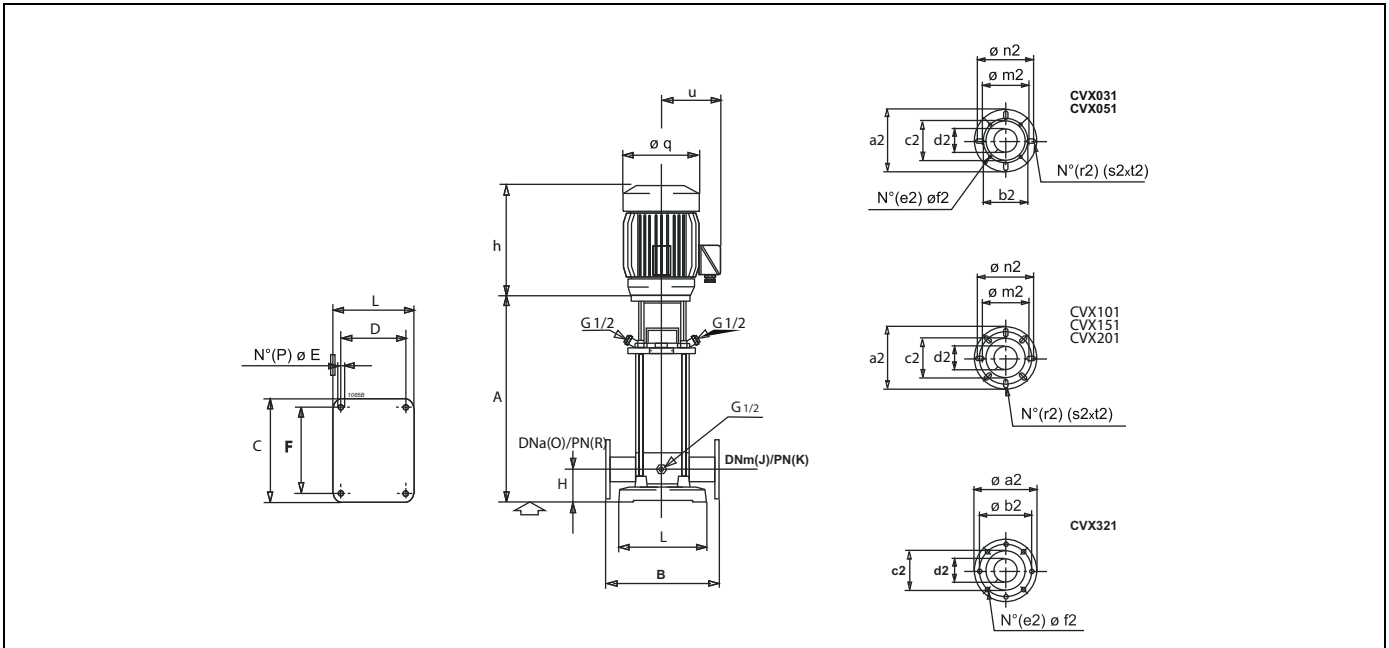


| Electric pump type <i>Electropompe type</i> Elettropompa tipo | | Motor power <i>Puiss. moteur</i> Potenza motore | | Capacity <i>Debit</i> Portata | | | | | | | | | | | | | |
|---|---|---|------|--|-----|-----|-----|-----|------|------|------|------|------|------|------|------|--|
| | | | | [l/s] | 0 | 12 | 14 | 16 | 18 | 20 | 22 | 24 | 26 | 28 | 30 | 32 | |
| | | | | [m³/h] | 0 | 43 | 50 | 58 | 65 | 72 | 79 | 86 | 94 | 101 | 108 | 115 | |
| | | | | [l/min] | 0 | 720 | 840 | 960 | 1080 | 1200 | 1320 | 1440 | 1560 | 1680 | 1800 | 1920 | |
| Single-phase <i>Monophasé</i> Monofase | Three-phase <i>Triphasé</i> Trifase | [kW] | [CV] | Total manometric head <i>Hauteur manométrique totale</i> Prevalenza manometrica totale | | | | | | | | | | | | | |
| | | | | [m] | 70 | 60 | 58 | 55 | 53 | 50 | 47 | 44 | 41 | 37 | 32,5 | 27,5 | |
| | CVX901/2+E31500T222-V/G | 15 | 20 | [m] | 70 | 60 | 58 | 55 | 53 | 50 | 47 | 44 | 41 | 37 | 32,5 | 27,5 | |
| | CVX901/3+E32200T222-V/G | 22 | 30 | [m] | 106 | 90 | 87 | 83 | 80 | 76 | 73 | 68 | 64 | 58 | 52 | 44 | |
| | CVX901/3-2+E31850T222-V/G | 18,5 | 25 | [m] | 82 | 72 | 69 | 67 | 64 | 61 | 57 | 52 | 46 | 39 | 31 | 22 | |
| | CVX901/4+E33000T222-V/G | 30 | 40 | [m] | 141 | 121 | 116 | 112 | 107 | 102 | 97 | 92 | 85 | 78 | 70 | 60 | |
| | CVX901/5+E33700T222-V/G | 37 | 50 | [m] | 176 | 150 | 145 | 139 | 134 | 128 | 122 | 114 | 106 | 97 | 87 | 75 | |
| | CVX901/6+E34500T222-V/G | 45 | 60 | [m] | 212 | 181 | 174 | 167 | 160 | 153 | 145 | 137 | 128 | 118 | 105 | 91 | |
| NPSH | | | | [m] | | 1,5 | 1,6 | 1,7 | 1,9 | 2,2 | 2,6 | 3,1 | 3,7 | 4,6 | 5,5 | 6,6 | |
| M.E.I. ≥ 0.40 | | | | | | | | | | | | | | | | | |

Overall dimensions and weights
Dimensions d'encadrement et poids
Dimensioni di ingombro e pesi

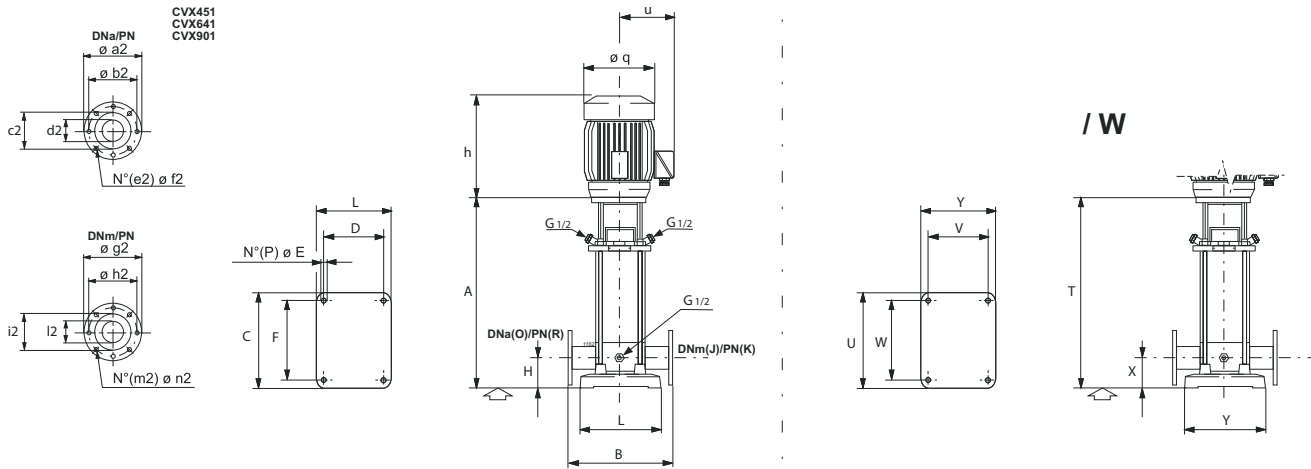


| Type Type Tipo | A | B | C | D | E | F | H | J | K | L | O | P | R | h | q | u | a2 | b2 | c2 | d2 | e2 | f2 | m2 | n2 | r2 | s2 | t2 | Weight Poids Peso |
|------------------------|------|-----|-----|-----|----|-----|----|-------|-------|-----|-------|---|-------|-----|-----|-----|-----|----|----|----|----|----|-----|-----|----|----|----|-------------------------|
| CVX031/5+E20037T211-V | 318 | 250 | 210 | 100 | 14 | 180 | 75 | 25/32 | 25 | 150 | 25/32 | 4 | 25 | 215 | 145 | 114 | 140 | 85 | 58 | 32 | 4 | 14 | 89 | 105 | 4 | 19 | 27 | 18,5 |
| CVX031/7+E20055T211-V | 354 | 250 | 210 | 100 | 14 | 180 | 75 | 25/32 | 25 | 150 | 25/32 | 4 | 25 | 215 | 145 | 114 | 140 | 85 | 58 | 32 | 4 | 14 | 89 | 105 | 4 | 19 | 27 | 20 |
| CVX031/10+E30075T212-V | 414 | 250 | 210 | 100 | 14 | 180 | 75 | 25/32 | 25 | 150 | 25/32 | 4 | 25 | 255 | 157 | 125 | 140 | 85 | 58 | 32 | 4 | 14 | 89 | 105 | 4 | 19 | 27 | 25,4 |
| CVX031/15+E30110T212-V | 504 | 250 | 210 | 100 | 14 | 180 | 75 | 25/32 | 25 | 150 | 25/32 | 4 | 25 | 255 | 157 | 125 | 140 | 85 | 58 | 32 | 4 | 14 | 89 | 105 | 4 | 19 | 27 | 29,1 |
| CVX031/19+E30150T212-V | 592 | 250 | 210 | 100 | 14 | 180 | 75 | 25/32 | 25 | 150 | 25/32 | 4 | 25 | 305 | 177 | 138 | 140 | 85 | 58 | 32 | 4 | 14 | 89 | 105 | 4 | 19 | 27 | 36,8 |
| CVX031/23+E30220T212-V | 664 | 250 | 210 | 100 | 14 | 180 | 75 | 25/32 | 25 | 150 | 25/32 | 4 | 25 | 335 | 177 | 138 | 140 | 85 | 58 | 32 | 4 | 14 | 89 | 105 | 4 | 19 | 27 | 41,3 |
| CVX031/29+E30220T212-V | 772 | 250 | 210 | 100 | 14 | 180 | 75 | 25/32 | 25 | 150 | 25/32 | 4 | 25 | 335 | 177 | 138 | 140 | 85 | 58 | 32 | 4 | 14 | 89 | 105 | 4 | 19 | 27 | 43,6 |
| CVX031/33+E30300T212-V | 848 | 250 | 210 | 100 | 14 | 180 | 75 | 25/32 | 25 | 150 | 25/32 | 4 | 25 | 380 | 205 | 150 | 140 | 85 | 58 | 32 | 4 | 14 | 89 | 105 | 4 | 19 | 27 | 52,5 |
| CVX031/36+E30300T212-V | 902 | 250 | 210 | 100 | 14 | 180 | 75 | 25/32 | 25 | 150 | 25/32 | 4 | 25 | 380 | 205 | 150 | 140 | 85 | 58 | 32 | 4 | 14 | 89 | 105 | 4 | 19 | 27 | 55,8 |
| CVX031/5+E20037M210-V | 318 | 250 | 210 | 100 | 14 | 180 | 75 | 25/32 | 25 | 150 | 25/32 | 4 | 25 | 213 | 135 | 107 | 140 | 85 | 58 | 32 | 4 | 14 | 89 | 105 | 4 | 19 | 27 | 18,3 |
| CVX031/7+E20055M210-V | 354 | 250 | 210 | 100 | 14 | 180 | 75 | 25/32 | 25 | 150 | 25/32 | 4 | 25 | 213 | 135 | 107 | 140 | 85 | 58 | 32 | 4 | 14 | 89 | 105 | 4 | 19 | 27 | 20 |
| CVX031/10+E20075M210-V | 414 | 250 | 210 | 100 | 14 | 180 | 75 | 25/32 | 25 | 150 | 25/32 | 4 | 25 | 241 | 155 | 141 | 140 | 85 | 58 | 32 | 4 | 14 | 89 | 105 | 4 | 19 | 27 | 25,1 |
| CVX031/15+E20110M210-V | 504 | 250 | 210 | 100 | 14 | 180 | 75 | 25/32 | 25 | 150 | 25/32 | 4 | 25 | 241 | 155 | 141 | 140 | 85 | 58 | 32 | 4 | 14 | 89 | 105 | 4 | 19 | 27 | 28,3 |
| CVX031/19+E20150M210-V | 592 | 250 | 210 | 100 | 14 | 180 | 75 | 25/32 | 25 | 150 | 25/32 | 4 | 25 | 261 | 175 | 160 | 140 | 85 | 58 | 32 | 4 | 14 | 89 | 105 | 4 | 19 | 27 | 34,8 |
| CVX031/23+E20220M210-V | 664 | 250 | 210 | 100 | 14 | 180 | 75 | 25/32 | 25 | 150 | 25/32 | 4 | 25 | 286 | 175 | 160 | 140 | 85 | 58 | 32 | 4 | 14 | 89 | 105 | 4 | 19 | 27 | 38,3 |
| CVX031/29+E20220M210-V | 772 | 250 | 210 | 100 | 14 | 180 | 75 | 25/32 | 25 | 150 | 25/32 | 4 | 25 | 286 | 175 | 160 | 140 | 85 | 58 | 32 | 4 | 14 | 89 | 105 | 4 | 19 | 27 | 40,6 |
| CVX051/4+E20055T211-V | 336 | 250 | 210 | 100 | 14 | 180 | 75 | 25/32 | 25 | 150 | 25/32 | 4 | 25 | 215 | 145 | 114 | 140 | 85 | 58 | 32 | 4 | 14 | 89 | 105 | 4 | 19 | 27 | 21 |
| CVX051/5+E30075T212-V | 369 | 250 | 210 | 100 | 14 | 180 | 75 | 25/32 | 25 | 150 | 25/32 | 4 | 25 | 255 | 157 | 125 | 140 | 85 | 58 | 32 | 4 | 14 | 89 | 105 | 4 | 19 | 27 | 25,8 |
| CVX051/8+E30110T212-V | 450 | 250 | 210 | 100 | 14 | 180 | 75 | 25/32 | 25 | 150 | 25/32 | 4 | 25 | 255 | 157 | 125 | 140 | 85 | 58 | 32 | 4 | 14 | 89 | 105 | 4 | 19 | 27 | 29,1 |
| CVX051/10+E30150T212-V | 520 | 250 | 210 | 100 | 14 | 180 | 75 | 25/32 | 25 | 150 | 25/32 | 4 | 25 | 305 | 177 | 138 | 140 | 85 | 58 | 32 | 4 | 14 | 89 | 105 | 4 | 19 | 27 | 35,4 |
| CVX051/13+E30220T212-V | 601 | 250 | 210 | 100 | 14 | 180 | 75 | 25/32 | 25 | 150 | 25/32 | 4 | 25 | 335 | 177 | 138 | 140 | 85 | 58 | 32 | 4 | 14 | 89 | 105 | 4 | 19 | 27 | 39,8 |
| CVX051/16+E30220T212-V | 682 | 250 | 210 | 100 | 14 | 180 | 75 | 25/32 | 25 | 150 | 25/32 | 4 | 25 | 335 | 177 | 138 | 140 | 85 | 58 | 32 | 4 | 14 | 89 | 105 | 4 | 19 | 27 | 41,5 |
| CVX051/20+E30300T212-V | 794 | 250 | 210 | 100 | 14 | 180 | 75 | 25/32 | 25 | 150 | 25/32 | 4 | 25 | 380 | 205 | 150 | 140 | 85 | 58 | 32 | 4 | 14 | 89 | 105 | 4 | 19 | 27 | 51,2 |
| CVX051/24+E30400T212-V | 902 | 250 | 210 | 100 | 14 | 180 | 75 | 25/32 | 25 | 150 | 25/32 | 4 | 25 | 345 | 220 | 172 | 140 | 85 | 58 | 32 | 4 | 14 | 89 | 105 | 4 | 19 | 27 | 57 |
| CVX051/29+E30400T212-V | 1037 | 250 | 210 | 100 | 14 | 180 | 75 | 25/32 | 25 | 150 | 25/32 | 4 | 25 | 345 | 220 | 172 | 140 | 85 | 58 | 32 | 4 | 14 | 89 | 105 | 4 | 19 | 27 | 59,9 |
| CVX051/36+E30550T222-V | 1256 | 250 | 210 | 100 | 14 | 180 | 75 | 25/32 | 25 | 150 | 25/32 | 4 | 25 | 375 | 256 | 192 | 140 | 85 | 58 | 32 | 4 | 14 | 89 | 105 | 4 | 19 | 27 | 82,5 |
| CVX051/4+E20055M210-V | 336 | 250 | 210 | 100 | 14 | 180 | 75 | 25/32 | 25 | 150 | 25/32 | 4 | 25 | 213 | 135 | 107 | 140 | 85 | 58 | 32 | 4 | 14 | 89 | 105 | 4 | 19 | 27 | 21 |
| CVX051/5+E20075M210-V | 369 | 250 | 210 | 100 | 14 | 180 | 75 | 25/32 | 25 | 150 | 25/32 | 4 | 25 | 241 | 155 | 141 | 140 | 85 | 58 | 32 | 4 | 14 | 89 | 105 | 4 | 19 | 27 | 25,5 |
| CVX051/8+E20110M210-V | 450 | 250 | 210 | 100 | 14 | 180 | 75 | 25/32 | 25 | 150 | 25/32 | 4 | 25 | 241 | 155 | 141 | 140 | 85 | 58 | 32 | 4 | 14 | 89 | 105 | 4 | 19 | 27 | 28,3 |
| CVX051/10+E20150M210-V | 520 | 250 | 210 | 100 | 14 | 180 | 75 | 25/32 | 25 | 150 | 25/32 | 4 | 25 | 261 | 175 | 160 | 140 | 85 | 58 | 32 | 4 | 14 | 89 | 105 | 4 | 19 | 27 | 33,4 |
| CVX051/13+E20220M210-V | 601 | 250 | 210 | 100 | 14 | 180 | 75 | 25/32 | 25 | 150 | 25/32 | 4 | 25 | 286 | 175 | 160 | 140 | 85 | 58 | 32 | 4 | 14 | 89 | 105 | 4 | 19 | 27 | 36,8 |
| CVX051/16+E20220M210-V | 682 | 250 | 210 | 100 | 14 | 180 | 75 | 25/32 | 25 | 150 | 25/32 | 4 | 25 | 286 | 175 | 160 | 140 | 85 | 58 | 32 | 4 | 14 | 89 | 105 | 4 | 19 | 27 | 38,5 |
| CVX101/3+E30110T212-V | 387 | 280 | 248 | 130 | 14 | 215 | 80 | 40 | 16-25 | 200 | 40 | 4 | 16-25 | 255 | 157 | 125 | 150 | - | 79 | 42 | - | - | 105 | 115 | 4 | 19 | 24 | 38,1 |
| CVX101/4+E30150T212-V | 433 | 280 | 248 | 130 | 14 | 215 | 80 | 40 | 16-25 | 200 | 40 | 4 | 16-25 | 305 | 177 | 138 | 150 | - | 79 | 42 | - | - | 105 | 115 | 4 | 19 | 24 | 45,1 |
| CVX101/6+E30220T212-V | 493 | 280 | 248 | 130 | 14 | 215 | 80 | 40 | 16-25 | 200 | 40 | 4 | 16-25 | 335 | 177 | 138 | 150 | - | 79 | 42 | - | - | 105 | 115 | 4 | 19 | 24 | 47 |
| CVX101/9+E30300T212-V | 588 | 280 | 248 | 130 | 14 | 215 | 80 | 40 | 16-25 | 200 | 40 | 4 | 16-25 | 380 | 205 | 150 | 150 | - | 79 | 42 | - | - | 105 | 115 | 4 | 19 | 24 | 60 |
| CVX101/12+E30400T212-V | 678 | 280 | 248 | 130 | 14 | 215 | 80 | 40 | 16-25 | 200 | 40 | 4 | 16-25 | 345 | 220 | 172 | 150 | - | 79 | 42 | - | - | 105 | 115 | 4 | 19 | 24 | 66,5 |
| CVX101/16+E30550T222-V | 830 | 280 | 248 | 130 | 14 | 215 | 80 | 40 | 16-25 | 200 | 40 | 4 | 16-25 | 375 | 256 | 192 | 150 | - | 79 | 42 | - | - | 105 | 115 | 4 | 19 | 24 | 94 |
| CVX101/22+E30750T222-V | 1010 | 280 | 248 | 130 | 14 | 215 | 80 | 40 | 16-25 | 200 | 40 | 4 | 16-25 | 375 | 256 | 192 | 150 | - | 79 | 42 | - | - | 105 | 115 | 4 | 19 | 24 | 105,6 |
| CVX101/3+E20110M210-V | 387 | 280 | 248 | 130 | 14 | 215 | 80 | 40 | 16-25 | 200 | 40 | 4 | 16-25 | 241 | 155 | 141 | 150 | - | 79 | 42 | - | - | 105 | 115 | 4 | 19 | 24 | 37,3 |
| CVX101/4+E20150M210-V | 433 | 280 | 248 | 130 | 14 | 215 | 80 | 40 | 16-25 | 200 | 40 | 4 | 16-25 | 261 | 175 | 160 | 150 | - | 79 | 42 | - | - | 105 | 115 | 4 | 19 | 24 | 43,1 |
| CVX101/6+E20220M210-V | 493 | 280 | 248 | 130 | 14 | 215 | 80 | 40 | 16-25 | 200 | 40 | 4 | 16-25 | 286 | 175 | 160 | 150 | - | 79 | 42 | - | - | 105 | 115 | 4 | 19 | 24 | 47,2 |
| CVX151/2+E30220T212-V | 413 | 300 | 248 | 130 | 14 | 215 | 90 | 50 | 16-25 | 200 | 50 | 4 | 16-25 | 335 | 177 | 138 | 165 | - | 93 | 65 | - | - | 121 | 127 | 8 | 19 | 22 | 47,8 |
| CVX151/3+E30300T212-V | 463 | 300 | 248 | 130 | 14 | 215 | 90 | 50 | 16-25 | 200 | 50 | 4 | 16-25 | 380 | 205 | 150 | 165 | - | 93 | 65 | - | - | 121 | 127 | 8 | 19 | 22 | 56 |



| Type Type Tipo | A | B | C | D | E | F | H | J | K | L | O | P | R | h | q | u | a2 | b2 | c2 | d2 | e2 | f2 | m2 | n2 | r2 | s2 | t2 | Weight Poids Peso |
|------------------------|------|-----|-----|-----|----|-----|-----|----|----------|-----|----|---|----------|-----|-----|-----|-----|-----|-----|----|----|----|-----|-----|----|----|----|-------------------------|
| CVX151/5+E30400T212-V | 553 | 300 | 248 | 130 | 14 | 215 | 90 | 50 | 16-25 | 200 | 50 | 4 | 16-25 | 345 | 220 | 172 | 165 | - | 93 | 65 | - | - | 121 | 127 | 8 | 19 | 22 | 62,3 |
| CVX151/7+E30550T222-V | 675 | 300 | 248 | 130 | 14 | 215 | 90 | 50 | 16-25 | 200 | 50 | 4 | 16-25 | 375 | 256 | 192 | 165 | - | 93 | 65 | - | - | 121 | 127 | 8 | 19 | 22 | 88,5 |
| CVX151/9+E30750T222-V | 765 | 300 | 248 | 130 | 14 | 215 | 90 | 50 | 16-25 | 200 | 50 | 4 | 16-25 | 375 | 256 | 192 | 165 | - | 93 | 65 | - | - | 121 | 127 | 8 | 19 | 22 | 96,8 |
| CVX151/12+E31100T222-V | 977 | 300 | 248 | 130 | 14 | 215 | 90 | 50 | 16-25 | 200 | 50 | 4 | 16-25 | 517 | 315 | 265 | 165 | - | 93 | 65 | - | - | 121 | 127 | 8 | 19 | 22 | 187,8 |
| CVX151/14+E31100T222-V | 1067 | 300 | 248 | 130 | 14 | 215 | 90 | 50 | 16-25 | 200 | 50 | 4 | 16-25 | 517 | 315 | 265 | 165 | - | 93 | 65 | - | - | 121 | 127 | 8 | 19 | 22 | 189,5 |
| CVX151/17+E31500T222-V | 1202 | 300 | 248 | 130 | 14 | 215 | 90 | 50 | 16-25 | 200 | 50 | 4 | 16-25 | 517 | 315 | 265 | 165 | - | 93 | 65 | - | - | 121 | 127 | 8 | 19 | 22 | 204,7 |
| CVX201/2+E30220T212-V | 413 | 300 | 248 | 130 | 14 | 215 | 90 | 50 | 16-25 | 200 | 50 | 4 | 16-25 | 335 | 177 | 138 | 165 | - | 93 | 65 | - | - | 121 | 127 | 8 | 19 | 22 | 47,8 |
| CVX201/3+E30400T212-V | 463 | 300 | 248 | 130 | 14 | 215 | 90 | 50 | 16-25 | 200 | 50 | 4 | 16-25 | 345 | 220 | 172 | 165 | - | 93 | 65 | - | - | 121 | 127 | 8 | 19 | 22 | 59,5 |
| CVX201/5+E30550T222-V | 585 | 300 | 248 | 130 | 14 | 215 | 90 | 50 | 16-25 | 200 | 50 | 4 | 16-25 | 375 | 256 | 192 | 165 | - | 93 | 65 | - | - | 121 | 127 | 8 | 19 | 22 | 85,7 |
| CVX201/7+E30750T222-V | 675 | 300 | 248 | 130 | 14 | 215 | 90 | 50 | 16-25 | 200 | 50 | 4 | 16-25 | 375 | 256 | 192 | 165 | - | 93 | 65 | - | - | 121 | 127 | 8 | 19 | 22 | 94 |
| CVX201/10+E31100T222-V | 887 | 300 | 248 | 130 | 14 | 215 | 90 | 50 | 16-25 | 200 | 50 | 4 | 16-25 | 517 | 315 | 265 | 165 | - | 93 | 65 | - | - | 121 | 127 | 8 | 19 | 22 | 183,9 |
| CVX201/14+E31500T222-V | 1067 | 300 | 248 | 130 | 14 | 215 | 90 | 50 | 16-25 | 200 | 50 | 4 | 16-25 | 517 | 315 | 265 | 165 | - | 93 | 65 | - | - | 121 | 127 | 8 | 19 | 22 | 200,5 |
| CVX201/17+E31850T222-V | 1202 | 300 | 248 | 130 | 14 | 215 | 90 | 50 | 16-25 | 200 | 50 | 4 | 16-25 | 517 | 315 | 265 | 165 | - | 93 | 65 | - | - | 121 | 127 | 8 | 19 | 22 | 216,7 |
| CVX321/2+E30400T212-V | 574 | 320 | 299 | 170 | 14 | 240 | 105 | 65 | 16-25-40 | 227 | 65 | 4 | 16-25-40 | 345 | 220 | 172 | 185 | 145 | 107 | 74 | 8 | 18 | - | - | - | - | - | 77,5 |
| CVX321/3+E30550T222-V | 644 | 320 | 299 | 170 | 14 | 240 | 105 | 65 | 16-25-40 | 227 | 65 | 4 | 16-25-40 | 375 | 256 | 192 | 185 | 145 | 107 | 74 | 8 | 18 | - | - | - | - | - | 94,5 |
| CVX321/4+E30750T222-V | 714 | 320 | 299 | 170 | 14 | 240 | 105 | 65 | 16-25-40 | 227 | 65 | 4 | 16-25-40 | 375 | 256 | 192 | 185 | 145 | 107 | 74 | 8 | 18 | - | - | - | - | - | 103,1 |
| CVX321/6+E31100T222-V | 964 | 320 | 299 | 170 | 14 | 240 | 105 | 65 | 16-25-40 | 227 | 65 | 4 | 16-25-40 | 517 | 315 | 265 | 185 | 145 | 107 | 74 | 8 | 18 | - | - | - | - | - | 198,2 |
| CVX321/8+E31500T222-V | 1104 | 320 | 299 | 170 | 14 | 240 | 105 | 65 | 16-25-40 | 227 | 65 | 4 | 16-25-40 | 517 | 315 | 265 | 185 | 145 | 107 | 74 | 8 | 18 | - | - | - | - | - | 215,4 |
| CVX321/10+E31850T222-V | 1244 | 320 | 299 | 170 | 14 | 240 | 105 | 65 | 16-25-40 | 227 | 65 | 4 | 16-25-40 | 517 | 315 | 265 | 185 | 145 | 107 | 74 | 8 | 18 | - | - | - | - | - | 232,7 |
| CVX321/12+E32200T222-V | 1384 | 320 | 299 | 170 | 14 | 240 | 105 | 65 | 16-25-40 | 227 | 65 | 4 | 16-25-40 | 555 | 360 | 280 | 185 | 145 | 107 | 74 | 8 | 18 | - | - | - | - | - | 278,6 |
| CVX321/14+E33000T222-V | 1524 | 320 | 299 | 170 | 14 | 240 | 105 | 65 | 16-25-40 | 227 | 65 | 4 | 16-25-40 | 628 | 400 | 310 | 185 | 145 | 107 | 74 | 8 | 18 | - | - | - | - | - | 348,1 |

Overall dimensions and weights
Dimensions d'encadrement et poids
Dimensioni di ingombro e pesi

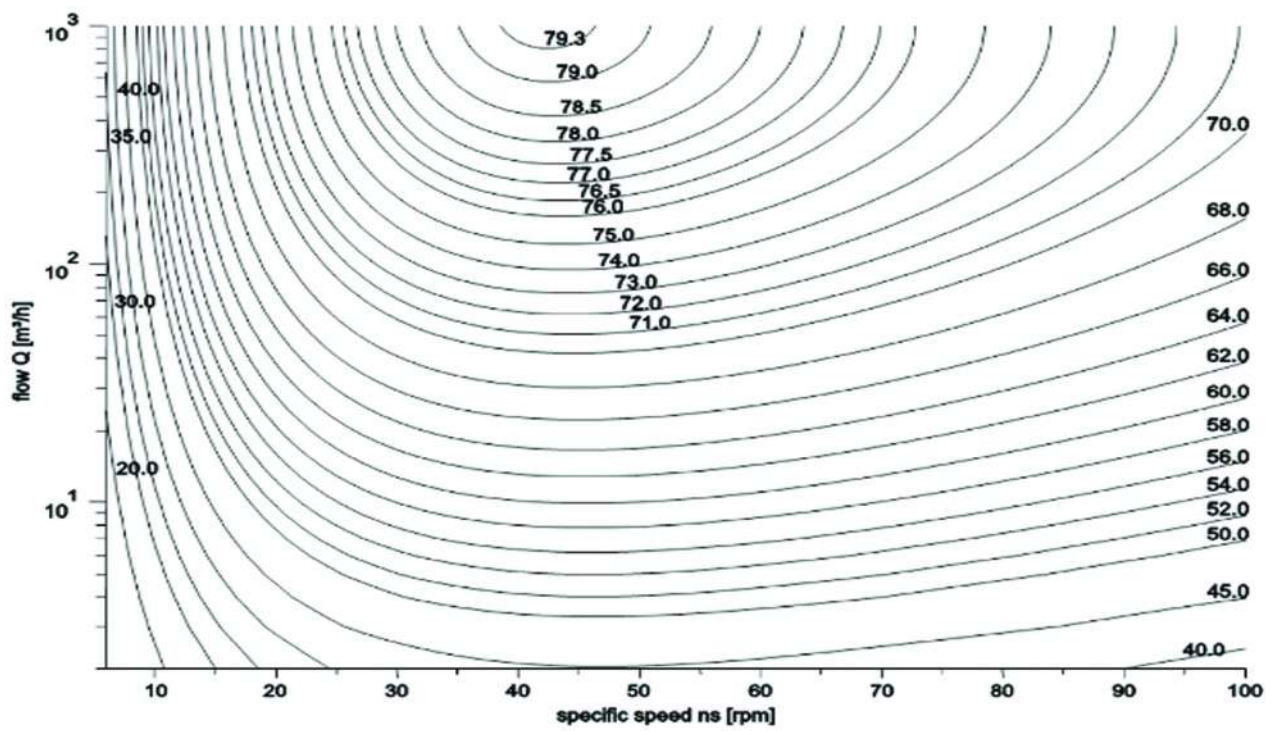


Variatione delle quote solo per la versione / W
Different dimensions for / W version only

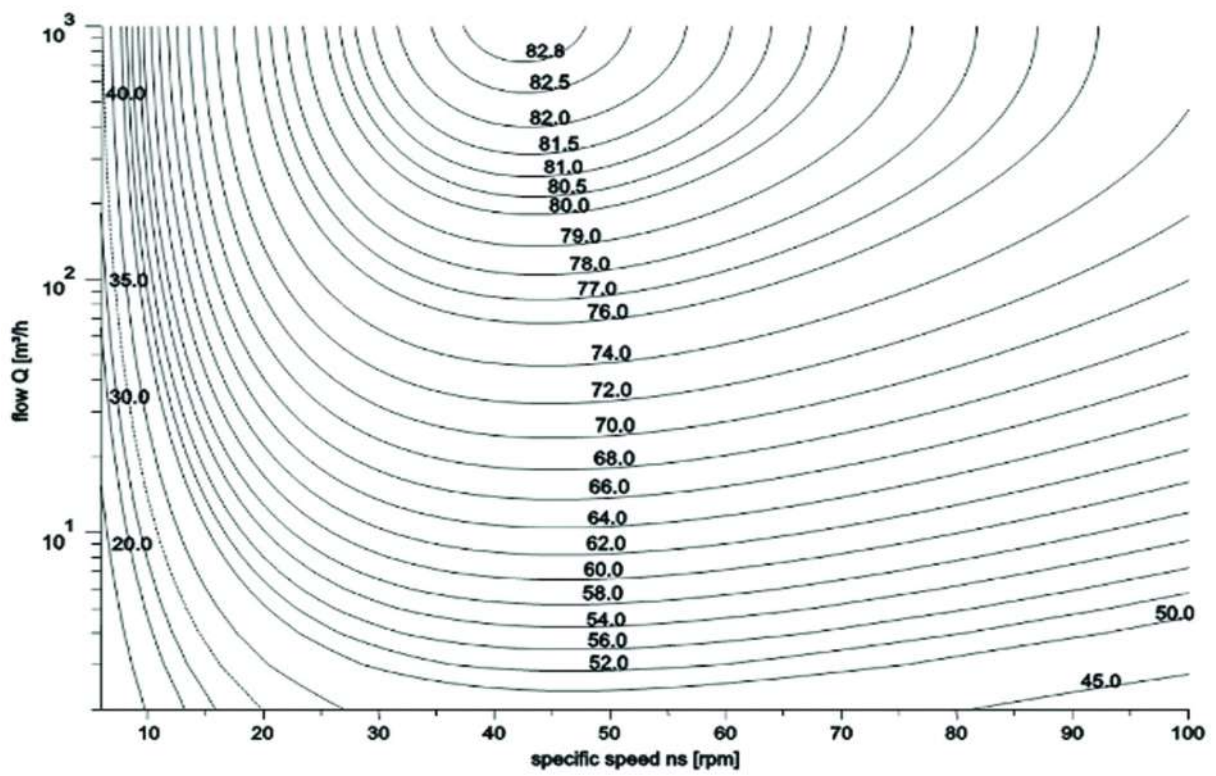
| Type Type Tipo | A | B | C | D | E | F | H | J | K | L | O | P | R | h | q | u | a2 | b2 | c2 | d2 | e2 | f2 | g2 | h2 | i2 | l2 | m2 | n2 | Weight Poids Peso |
|----------------------------|------|-----|-----|-----|----|-----|-----|-----|----------|-----|-----|---|----------|-----|-----|-----|-----|-----|-----|-----|----|----|-----|-----|-----|-----|----|----|-------------------------|
| CVX451/1+E30400T212-V/G | 561 | 365 | 330 | 188 | 14 | 268 | 142 | 80 | 16-25-40 | 247 | 80 | 4 | 16-25-40 | 345 | 220 | 172 | 200 | 160 | 120 | 80 | 8 | 18 | 200 | 160 | 120 | 80 | 8 | 18 | 91,3 |
| CVX451/2+E30750T222-V/G | 641 | 365 | 330 | 188 | 14 | 268 | 142 | 80 | 16-25-40 | 247 | 80 | 4 | 16-25-40 | 375 | 256 | 192 | 200 | 160 | 120 | 80 | 8 | 18 | 200 | 160 | 120 | 80 | 8 | 18 | 112,9 |
| CVX451/3+E31100T222-V/G | 831 | 365 | 330 | 188 | 14 | 268 | 142 | 80 | 16-25-40 | 247 | 80 | 4 | 16-25-40 | 517 | 315 | 265 | 200 | 160 | 120 | 80 | 8 | 18 | 200 | 160 | 120 | 80 | 8 | 18 | 205,6 |
| CVX451/4+E31500T222-V/G | 911 | 365 | 330 | 188 | 14 | 268 | 142 | 80 | 16-25-40 | 247 | 80 | 4 | 16-25-40 | 517 | 315 | 265 | 200 | 160 | 120 | 80 | 8 | 18 | 200 | 160 | 120 | 80 | 8 | 18 | 220,3 |
| CVX451/5-2+E31850T222-V/G | 991 | 365 | 330 | 188 | 14 | 268 | 142 | 80 | 16-25-40 | 247 | 80 | 4 | 16-25-40 | 517 | 315 | 265 | 200 | 160 | 120 | 80 | 8 | 18 | 200 | 160 | 120 | 80 | 8 | 18 | 235,9 |
| CVX451/6+E32200T222-V/G | 1071 | 365 | 330 | 188 | 14 | 268 | 142 | 80 | 16-25-40 | 247 | 80 | 4 | 16-25-40 | 555 | 360 | 280 | 200 | 160 | 120 | 80 | 8 | 18 | 200 | 160 | 120 | 80 | 8 | 18 | 280,4 |
| CVX451/9-2+E33000T222-V/G | 1311 | 365 | 330 | 188 | 14 | 268 | 142 | 80 | 16-25-40 | 247 | 80 | 4 | 16-25-40 | 628 | 400 | 310 | 200 | 160 | 120 | 80 | 8 | 18 | 200 | 160 | 120 | 80 | 8 | 18 | 355,6 |
| CVX451/10+E33700T222-V/G | 1391 | 365 | 330 | 188 | 14 | 268 | 142 | 80 | 16-25-40 | 247 | 80 | 4 | 16-25-40 | 628 | 400 | 310 | 200 | 160 | 120 | 80 | 8 | 18 | 200 | 160 | 120 | 80 | 8 | 18 | 390,7 |
| CVX451/13-2+E34500T222-V/G | 1631 | 365 | 330 | 188 | 14 | 268 | 142 | 80 | 16-25-40 | 247 | 80 | 4 | 16-25-40 | 665 | 450 | 330 | 200 | 160 | 120 | 80 | 8 | 18 | 200 | 160 | 120 | 80 | 8 | 18 | 448,7 |
| CVX641/2+E31100T222-V/G | 756 | 380 | 330 | 188 | 14 | 266 | 142 | 100 | 25 | 247 | 100 | 4 | 16 | 517 | 315 | 265 | 220 | 180 | 150 | 100 | 8 | 18 | 235 | 190 | 150 | 100 | 8 | 22 | 196,2 |
| CVX641/3-1+E31500T222-V/G | 838 | 380 | 330 | 188 | 14 | 266 | 142 | 100 | 25 | 247 | 100 | 4 | 16 | 517 | 315 | 265 | 220 | 180 | 150 | 100 | 8 | 18 | 235 | 190 | 150 | 100 | 8 | 22 | 211,6 |
| CVX641/4+E32200T222-V/G | 921 | 380 | 330 | 188 | 14 | 266 | 142 | 100 | 25 | 247 | 100 | 4 | 16 | 555 | 360 | 280 | 220 | 180 | 150 | 100 | 8 | 18 | 235 | 190 | 150 | 100 | 8 | 22 | 268,3 |
| CVX641/4-2+E31850T222-V/G | 921 | 380 | 330 | 188 | 14 | 266 | 142 | 100 | 25 | 247 | 100 | 4 | 16 | 517 | 315 | 265 | 220 | 180 | 150 | 100 | 8 | 18 | 235 | 190 | 150 | 100 | 8 | 22 | 227,5 |
| CVX641/6-2+E33000T222-V/G | 1086 | 380 | 330 | 188 | 14 | 266 | 142 | 100 | 25 | 247 | 100 | 4 | 16 | 628 | 400 | 310 | 220 | 180 | 150 | 100 | 8 | 18 | 235 | 190 | 150 | 100 | 8 | 22 | 340,3 |
| CVX641/7-1+E33700T222-V/G | 1168 | 380 | 330 | 188 | 14 | 266 | 142 | 100 | 25 | 247 | 100 | 4 | 16 | 628 | 400 | 310 | 220 | 180 | 150 | 100 | 8 | 18 | 235 | 190 | 150 | 100 | 8 | 22 | 372,2 |
| CVX641/8-1+E34500T222-V/G | 1255 | 380 | 330 | 188 | 14 | 266 | 142 | 100 | 25 | 247 | 100 | 4 | 16 | 665 | 450 | 330 | 220 | 180 | 150 | 100 | 8 | 18 | 235 | 190 | 150 | 100 | 8 | 22 | 437,2 |
| CVX901/2+E31500T222-V/G | 774 | 380 | 346 | 199 | 14 | 280 | 140 | 100 | 25 | 263 | 100 | 4 | 16 | 517 | 315 | 265 | 220 | 180 | 150 | 100 | 8 | 18 | 235 | 190 | 150 | 100 | 8 | 22 | 221,9 |
| CVX901/3+E32200T222-V/G | 866 | 380 | 346 | 199 | 14 | 280 | 140 | 100 | 25 | 263 | 100 | 4 | 16 | 555 | 360 | 280 | 220 | 180 | 150 | 100 | 8 | 18 | 235 | 190 | 150 | 100 | 8 | 22 | 279,7 |
| CVX901/3-2+E31850T222-V/G | 866 | 380 | 346 | 199 | 14 | 280 | 140 | 100 | 25 | 263 | 100 | 4 | 16 | 517 | 315 | 265 | 220 | 180 | 150 | 100 | 8 | 18 | 235 | 190 | 150 | 100 | 8 | 22 | 238,9 |
| CVX901/4+E33000T222-V/G | 958 | 380 | 346 | 199 | 14 | 280 | 140 | 100 | 25 | 263 | 100 | 4 | 16 | 628 | 400 | 310 | 220 | 180 | 150 | 100 | 8 | 18 | 235 | 190 | 150 | 100 | 8 | 22 | 349,1 |
| CVX901/5+E33700T222-V/G | 1050 | 380 | 346 | 199 | 14 | 280 | 140 | 100 | 25 | 263 | 100 | 4 | 16 | 628 | 400 | 310 | 220 | 180 | 150 | 100 | 8 | 18 | 235 | 190 | 150 | 100 | 8 | 22 | 383,5 |
| CVX901/6+E34500T222-V/G | 1142 | 380 | 346 | 199 | 14 | 280 | 140 | 100 | 25 | 263 | 100 | 4 | 16 | 665 | 450 | 330 | 220 | 180 | 150 | 100 | 8 | 18 | 235 | 190 | 150 | 100 | 8 | 22 | 449,6 |

| Type / Type / Tipo | T | U | V | W | X | Y | Weight / Poids / Peso |
|----------------------------|------|-----|-----|-----|-----|-----|-----------------------|
| CVX451/1+E30400T212-V/G | 559 | 330 | 190 | 265 | 140 | 251 | 91,3 |
| CVX451/2+E30750T222-V/G | 639 | 330 | 190 | 265 | 140 | 251 | 112,9 |
| CVX451/3+E31100T222-V/G | 829 | 330 | 190 | 265 | 140 | 251 | 205,6 |
| CVX451/4+E31500T222-V/G | 909 | 330 | 190 | 265 | 140 | 251 | 220,3 |
| CVX451/5-2+E31850T222-V/G | 989 | 330 | 190 | 265 | 140 | 251 | 235,9 |
| CVX451/6+E32200T222-V/G | 1069 | 330 | 190 | 265 | 140 | 251 | 280,4 |
| CVX451/9-2+E33000T222-V/G | 1309 | 330 | 190 | 265 | 140 | 251 | 355,6 |
| CVX451/10+E33700T222-V/G | 1389 | 330 | 190 | 265 | 140 | 251 | 390,7 |
| CVX451/13-2+E34500T222-V/G | 1629 | 330 | 190 | 265 | 140 | 251 | 448,7 |
| CVX641/2+E31100T222-V/G | 756 | 330 | 190 | 265 | 140 | 251 | 196,2 |
| CVX641/3-1+E31500T222-V/G | 838 | 330 | 190 | 265 | 140 | 251 | 211,6 |
| CVX641/4+E32200T222-V/G | 921 | 330 | 190 | 265 | 140 | 251 | 268,3 |
| CVX641/4-2+E31850T222-V/G | 921 | 330 | 190 | 265 | 140 | 251 | 227,5 |
| CVX641/6-2+E33000T222-V/G | 1086 | 330 | 190 | 265 | 140 | 251 | 340,3 |
| CVX641/7-1+E33700T222-V/G | 1168 | 330 | 190 | 265 | 140 | 251 | 372,2 |
| CVX641/8-1+E34500T222-V/G | 1255 | 330 | 190 | 265 | 140 | 251 | 437,2 |
| CVX901/2+E31500T222-V/G | 778 | 345 | 199 | 280 | 140 | 260 | 221,9 |
| CVX901/3+E32200T222-V/G | 870 | 345 | 199 | 280 | 140 | 260 | 279,7 |
| CVX901/3-2+E31850T222-V/G | 870 | 345 | 199 | 280 | 140 | 260 | 238,9 |
| CVX901/4+E33000T222-V/G | 962 | 345 | 199 | 280 | 140 | 260 | 349,1 |
| CVX901/5+E33700T222-V/G | 1054 | 345 | 199 | 280 | 140 | 260 | 383,5 |
| CVX901/6+E34500T222-V/G | 1146 | 345 | 199 | 280 | 140 | 260 | 449,6 |

MEI = 0.4 for Multistage Vertical 2900rpm



MEI=0.7 for Mutistage Vertical 2900 rpm



caprari

The dimensions have an indicative value. Executive drawing will be supplied on request upon order.
CAPRARI S.p.A. reserves the right to make changes to improve its products at any time and without any notice

*Les dimensions sont fournies à titre indicatif. Le plan bon pour exécution sera fourni sur demande au moment de la commande.
CAPRARI S.p.A. se réserve la faculté d'apporter des modifications visant à améliorer ses propres produits à tout moment et sans aucun préavis.*

**Le dimensioni hanno valore indicativo. Il disegno esecutivo sarà fornito su richiesta in fase d'ordine.
CAPRARI S.p.A. si riserva facoltà di apportare modifiche atte a migliorare i propri prodotti in qualsiasi momento e senza preavviso alcuno.**